

## Key Plan



# Krish Shopping Mall



#### PROJECT DEVELOPERS:

KRISH DEVELOPERS & CONSULTANTS (U) LTD

P.O.Box No.28341,KAMPALA,UGANDA.

#### CONTACT PERSON:

RAVI BHATIA: +256 712 671276

Vinay Patel: +256713260505

[rrbhatia2004@yahoo.co.in](mailto:rrbhatia2004@yahoo.co.in)

[krishgeoup2006@yahoo.com](mailto:krishgeoup2006@yahoo.com)

#### MARKETING PERSON:

PRITI BHATIA: +256 71 3260505

Laxesh Soni: +256 711235043

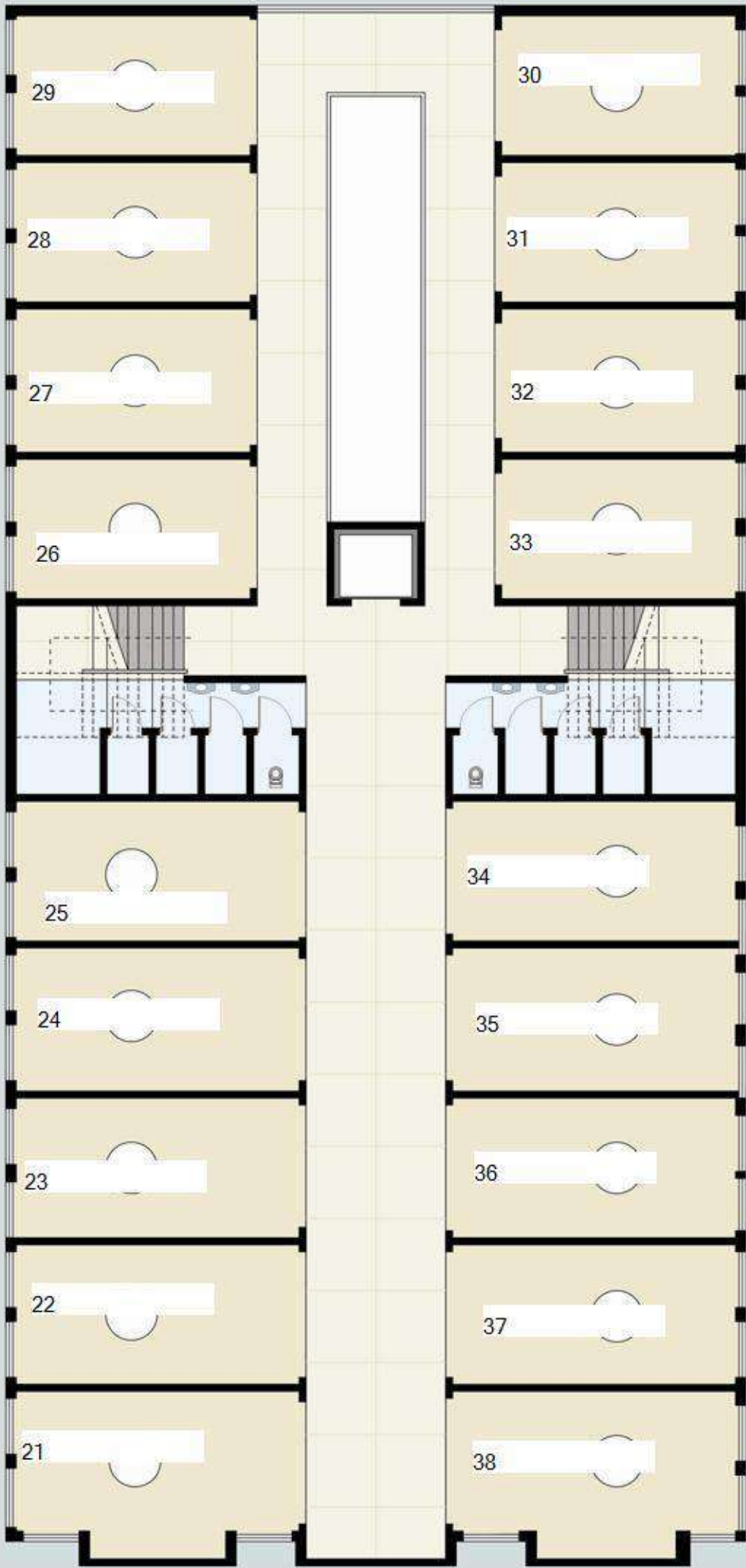
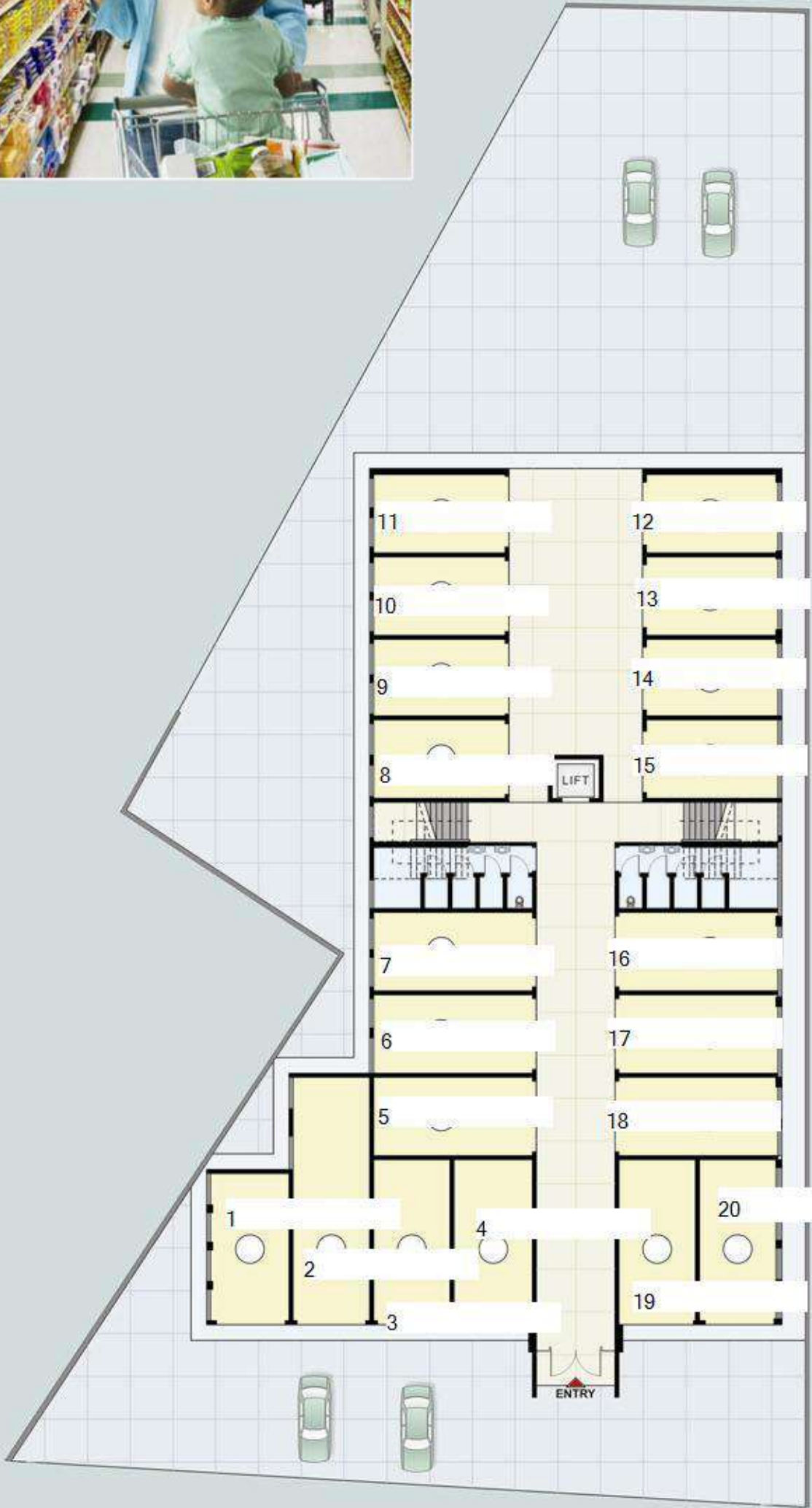
#### DESIGNER

**RACHAITA  
SURESH PATEL**

Ahmedabad, INDIA. Ph. : +91-79-27430507

Ground Floor

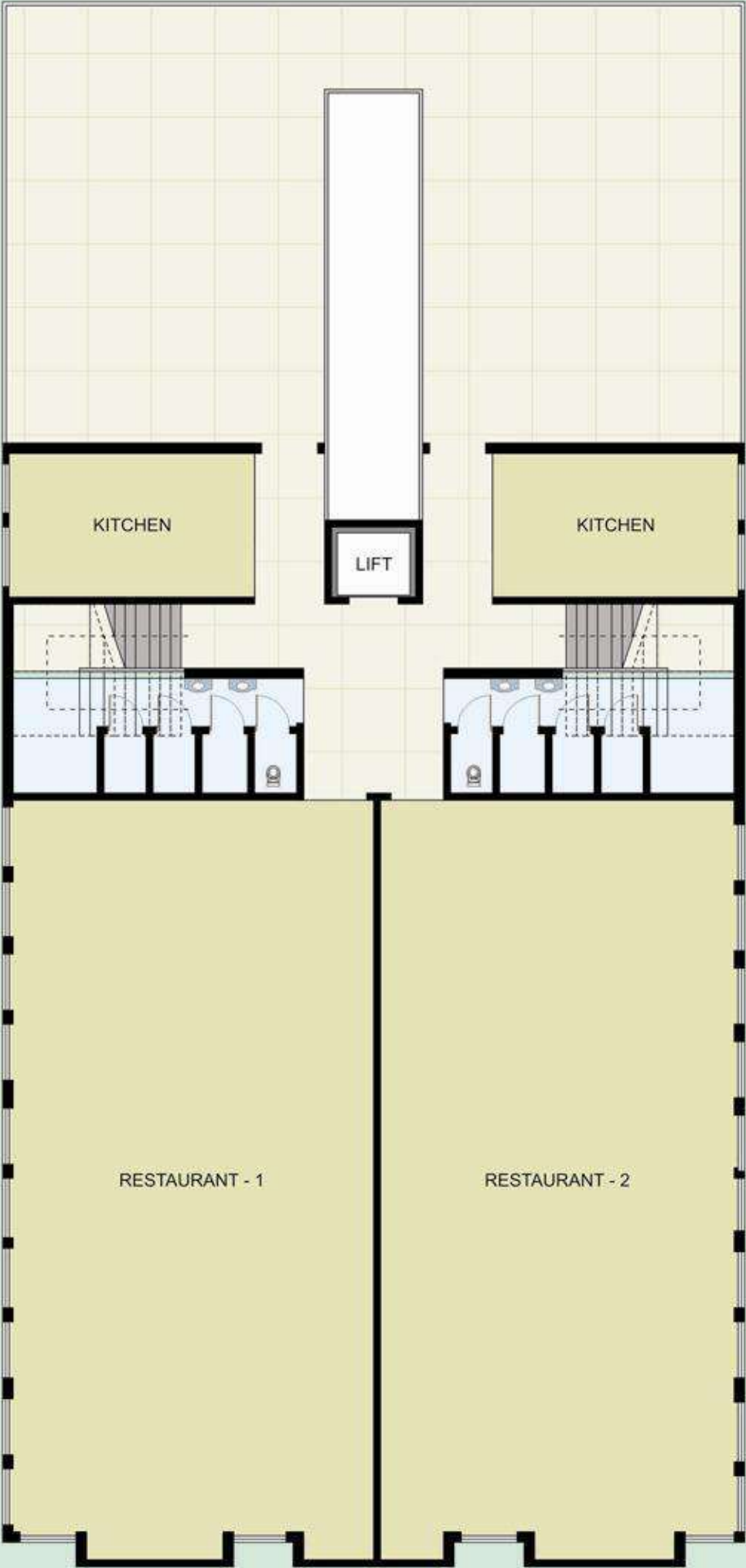
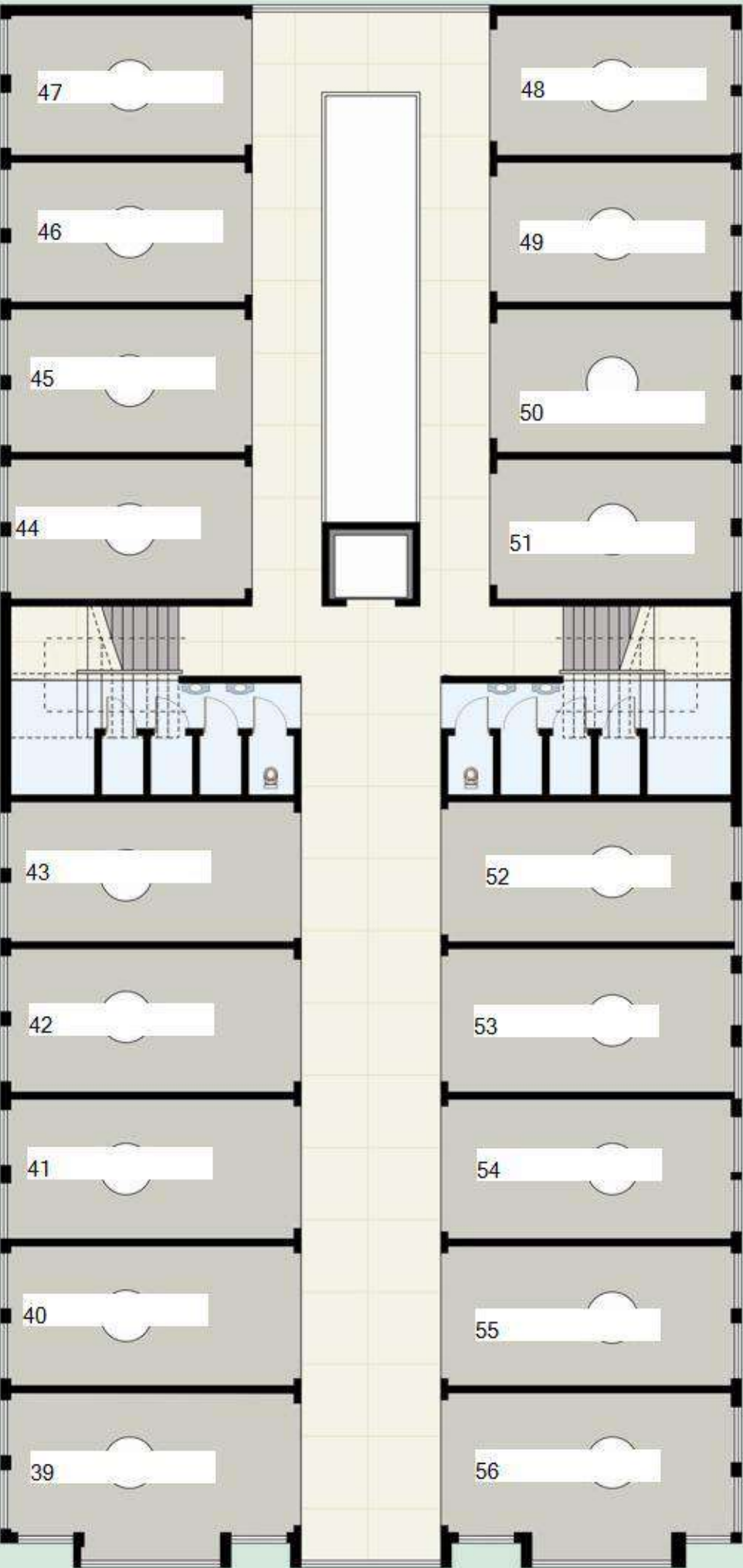
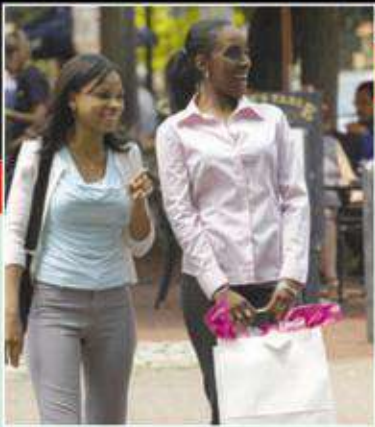
Shops 1-20



First Floor

Shops 21-38

Second Floor Shops 39-56

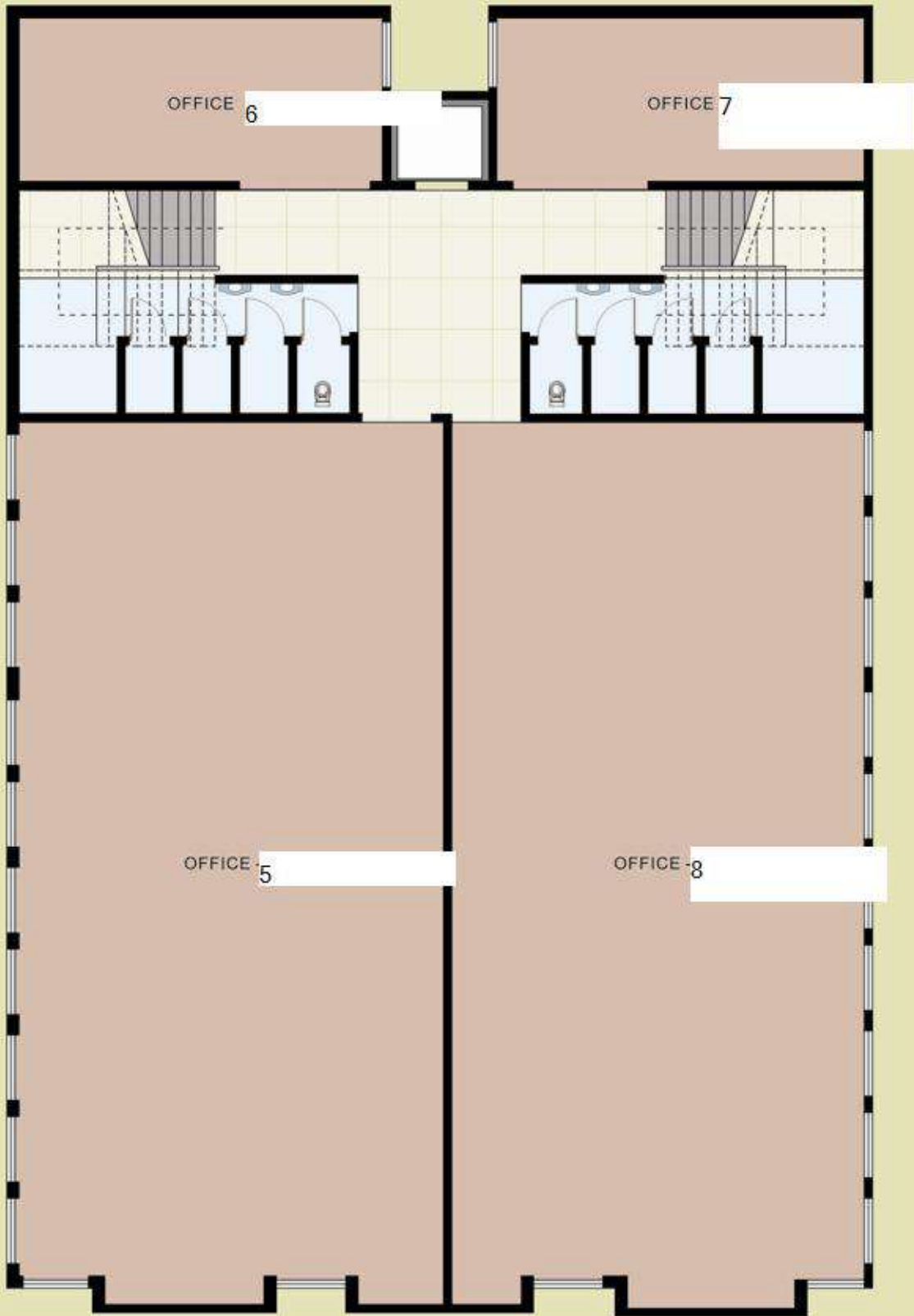
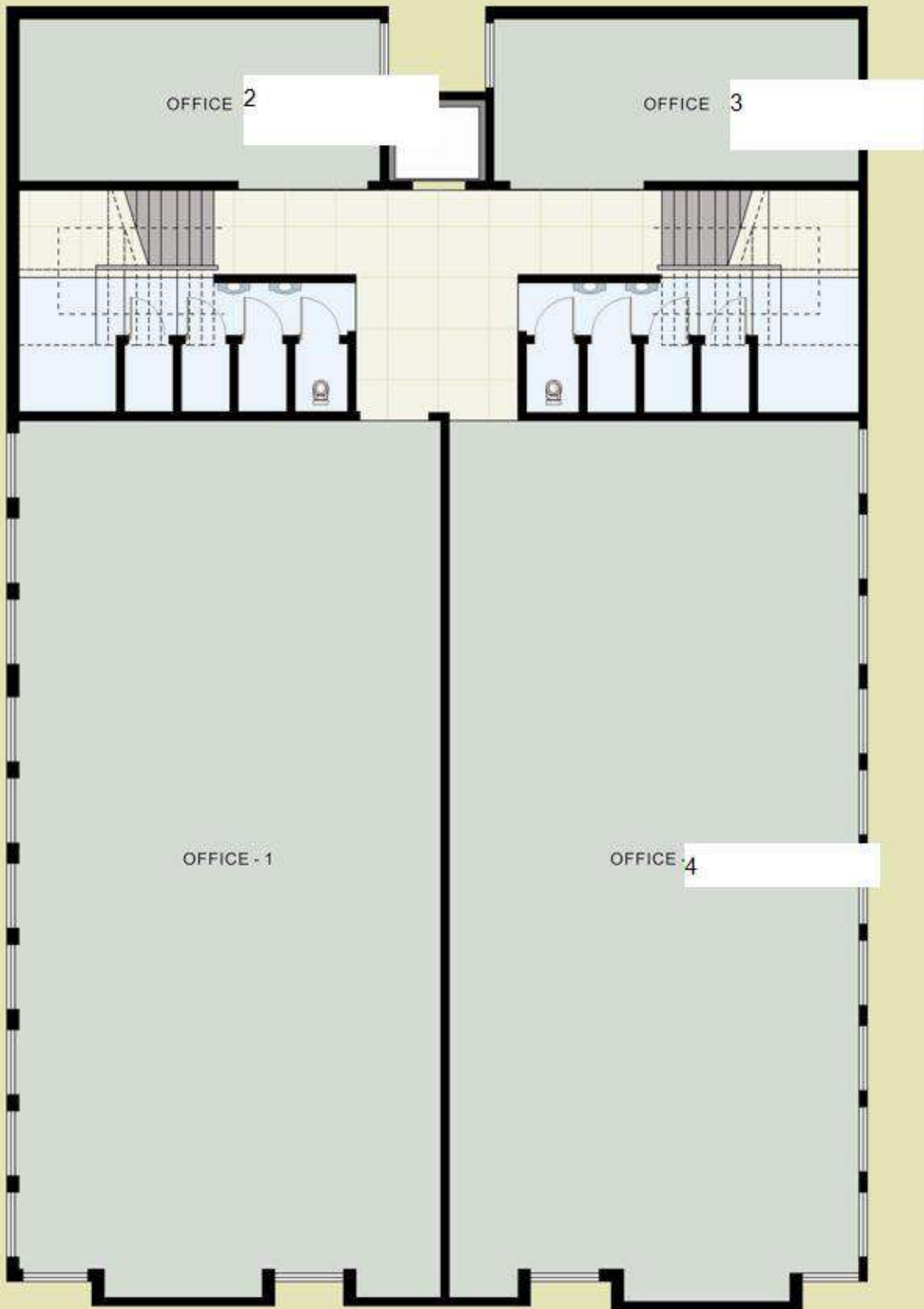


Third Floor

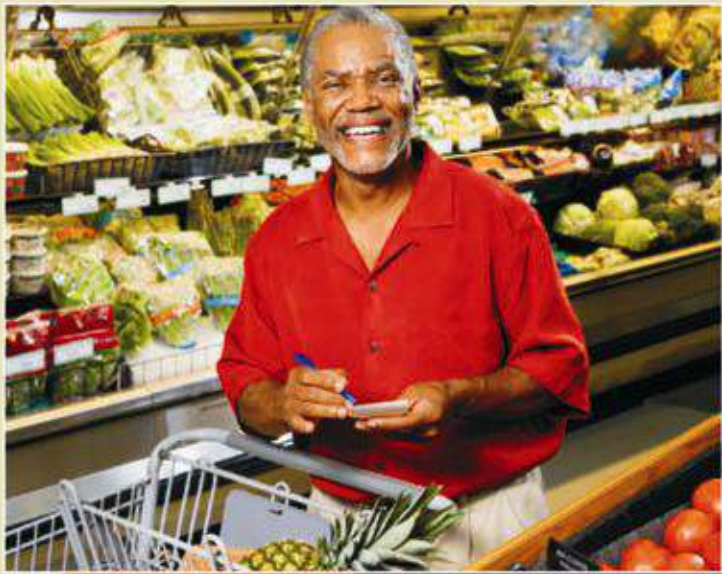
Forth Floor



Forth Floor



Fifth Floor



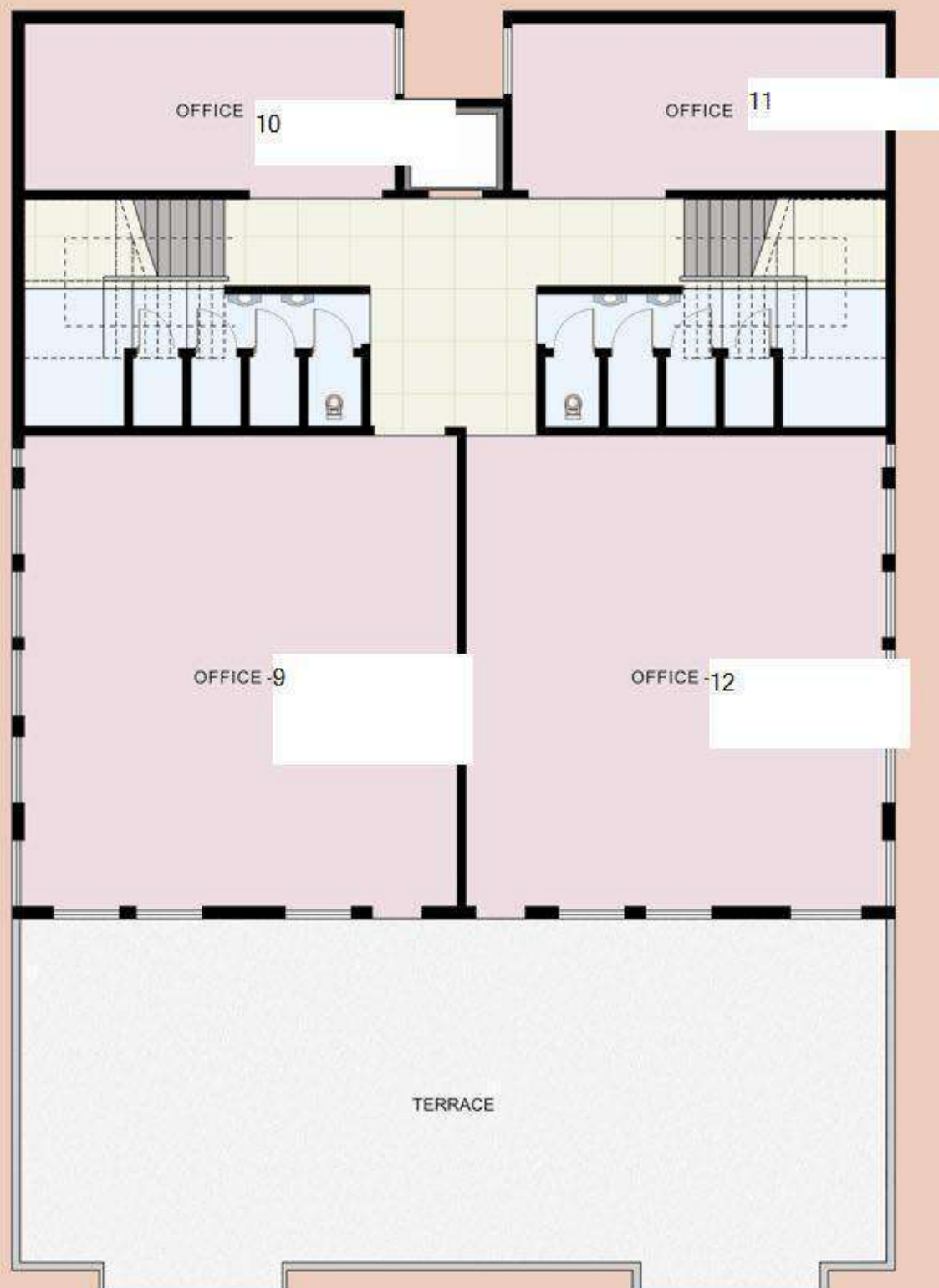
Fifth Floor



## Sixth Floor



Sixth  
Floor



### Specification

Structure	: R.C.C. Frame Structure.
Walling	: Solid block wall.
Plaster	: Internal cement finish plaster
Doors	: Aluminium partition with aluminium shutters
Floor Finish	: Ceramic tiles in all shop.
Electrification	: Single phase concealed wiring with good quality accessories.

### Salient Features

- Decorative Entrance.
- Loan papers facilities.
- 24 Hours Security.
- Near payless supermarket and barclays banks  
Opposite of DFCU bank

### Rules and Regulation

- All right are reserved by developers to make any changes in plan elevation and any other details.
- No external changes will be allowed.
- Internal changes shall be allowed with prior permission of an architect and shall be charge extra as in advance.
- All legal charges, U.E.B. Charges, VAT taxable Charges, of Govt. borne by the members.
- Any extra charges due to chages in government policiy will be borne by the members.
- Polluted business are not allowed in premises.
- Terrace and side margin rights are reserved for the developers.
- Irregular payment may cause cancellation of booking.
- In case of interst or new book value will be cahrged.
- Any chages will be binding to all members.

