

Welcome to Uganda's First Circular 7- Star Residential Icon

Where Imagination Crafted from Dreams Becomes an Icon of Luxury,
and gets Defined by Elegance

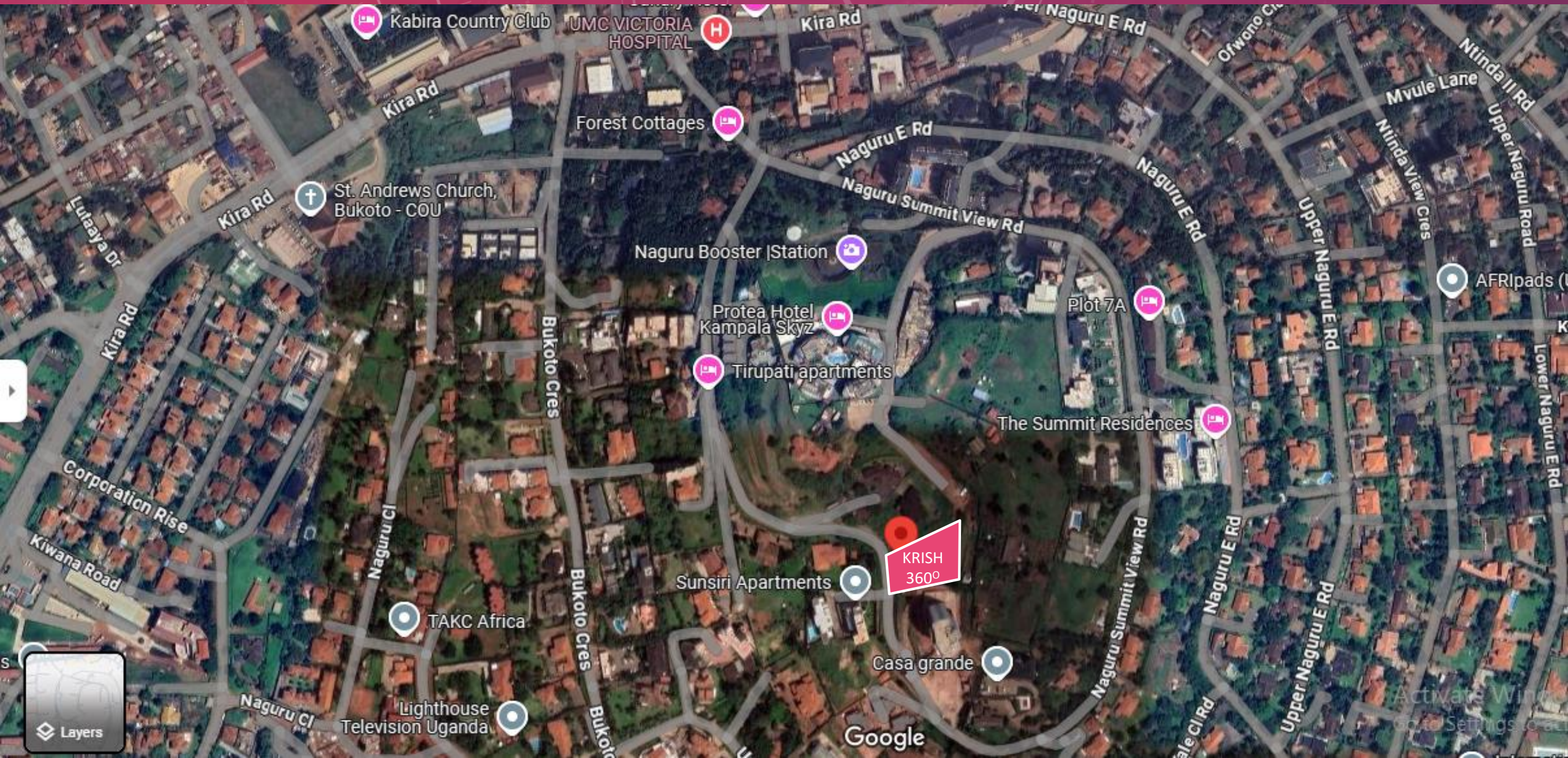
Krish 360°

NAGURU

A PERFECT CIRCLE OF LUXURY



Imagine Waking Up To Breathtaking Views, Enjoying State-of-the-art Amenities, And Being Surrounded By A Vibrant Area; At KRISH 360°, We Have Curated A Living Experience That Transcends Expectations.



KRISH GROUP OF COMPANIES is thrilled to introduce our newest addition to the city skyline, a haven of modern living and sophisticated design –
KRISH 360° - Naguru.

Uganda's First Ever 7 Star Circular Residence with Helipad, Rooftop Revolving Restaurant and other Array of World Class Amenities

Welcome to the one of its kind;

Krish 360°

A Perfect Circle of Luxury



<https://maps.app.goo.gl/Z18raGyCHwiFW6Tt9>

Naguru Hill View

Naguru Hill View

Kololo Hill View



Krish 360°

LIFE IN A PERFECT CIRCLE SHAPE

KRISH GROUP Presents Krish 360° Uganda's First-Ever Circular Residences – Where the Sky is Not the Limit

Step into a new era of iconic living with Krish 360° – a visionary landmark rising as Uganda's first circular residential masterpiece. Crafted for the extraordinary, this one-of-a-kind address offers uninterrupted 360° views and an unmatched lifestyle of elegance, innovation, and indulgence.

A dream too bold to imagine has now taken shape - Kampala's first circular residential tower rises like a vision from the future, offering a living experience so extraordinary, it feels like stepping into a dream made real.

Shape your Life in a Circle full of never seen unique Luxurious Amenities Signature Highlights of Helipad for seamless arrivals, Revolving Rooftop Restaurant open to the sky, Cinema/ Home Theater Lounge, World-Class Spa & Wellness Sanctuary and among others

Sky-high views that redefine city living; Krish 360° – Live the Curve of Luxury.

Designed in a seamless circle redefining modern living with panoramic views, harmonious design, and first time in Kampala ever amenities that flows effortlessly - just like its shape.

Each curve and angle designed is crafted for elegance. This is not just a residence - it's a statement. From grand, flowing interiors to world-class amenities nestled within its perfect ring

Naguru Hill View

Naguru Hill View

Naguru Hill View

Kololo Hill View

**Naguru Hill Drive/
National Water Road**



Krish 360°

Located on Plot No. 8, Naguru Hill Drive – Naguru, Kampala; Adjacent to Protea Hotel Kampala Skyz, in one of the most prestigious and elevated neighborhoods of the city, offering panoramic views of the Kampala skyline.

Total Units of 42 Ultra-Luxury Apartments Per Block of 13 Floors of Residences with 1 apartment per floor, ensuring unmatched privacy of 39 units of 3BHK + Maid's Room, each spanning 315 sq. and 3 Penthouses (1 per block) of 4BHK + Maid's Room, each a grand 630 sq.

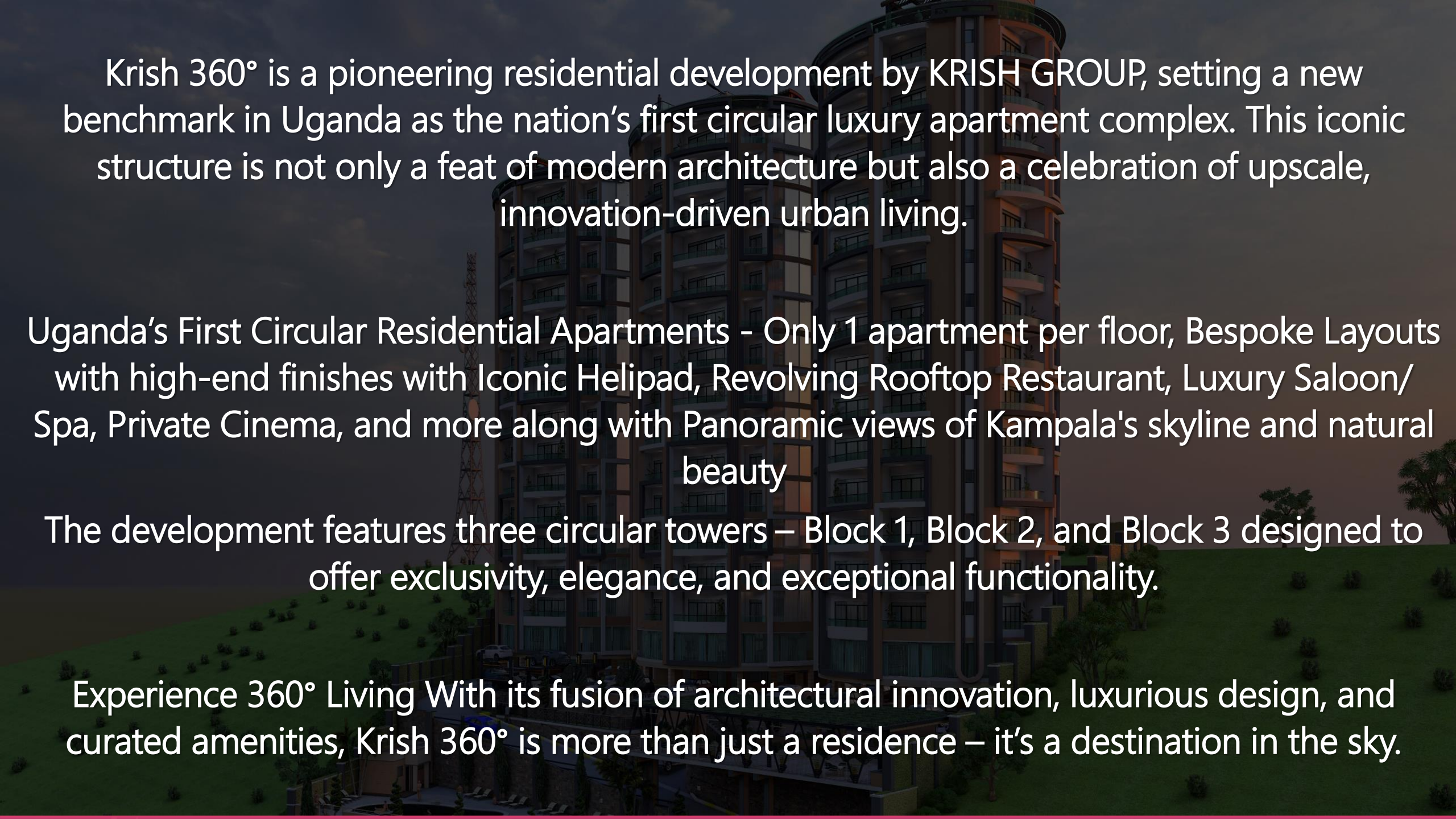
Each apartment is designed with 360° views, abundant natural light, spacious layouts for refined living and Signature Amenities such as;

- Block 1 – 1st Floor: Gym, Massage Rooms, Saloon/ Spa, Sauna – a complete wellness retreat and 17th Floor: Restaurant Space with skyline views
- Block 2 – 1st Floor: State-of-the-art Cinema & Theater and 17th Floor: Elegant Common Terrace Sitting Lounge with 18th Floor: Private Helipad – First of its kind in Uganda residential living
- Block 3 – 1st Floor: Restaurant Area and 17th Floor: Revolving Open-to-Sky Rooftop Restaurant – a true architectural marvel and culinary destination







A tall, circular luxury apartment complex with multiple balconies and a modern facade, set against a dark sky at dusk. The building is illuminated from within, showing the interior lights of the apartments. The surrounding area includes some greenery and a few trees in the foreground.

Krish 360° is a pioneering residential development by KRISH GROUP, setting a new benchmark in Uganda as the nation's first circular luxury apartment complex. This iconic structure is not only a feat of modern architecture but also a celebration of upscale, innovation-driven urban living.

Uganda's First Circular Residential Apartments - Only 1 apartment per floor, Bespoke Layouts with high-end finishes with Iconic Helipad, Revolving Rooftop Restaurant, Luxury Saloon/Spa, Private Cinema, and more along with Panoramic views of Kampala's skyline and natural beauty

The development features three circular towers – Block 1, Block 2, and Block 3 designed to offer exclusivity, elegance, and exceptional functionality.

Experience 360° Living With its fusion of architectural innovation, luxurious design, and curated amenities, Krish 360° is more than just a residence – it's a destination in the sky.

















↓ ↓
BASEMENT PARKING

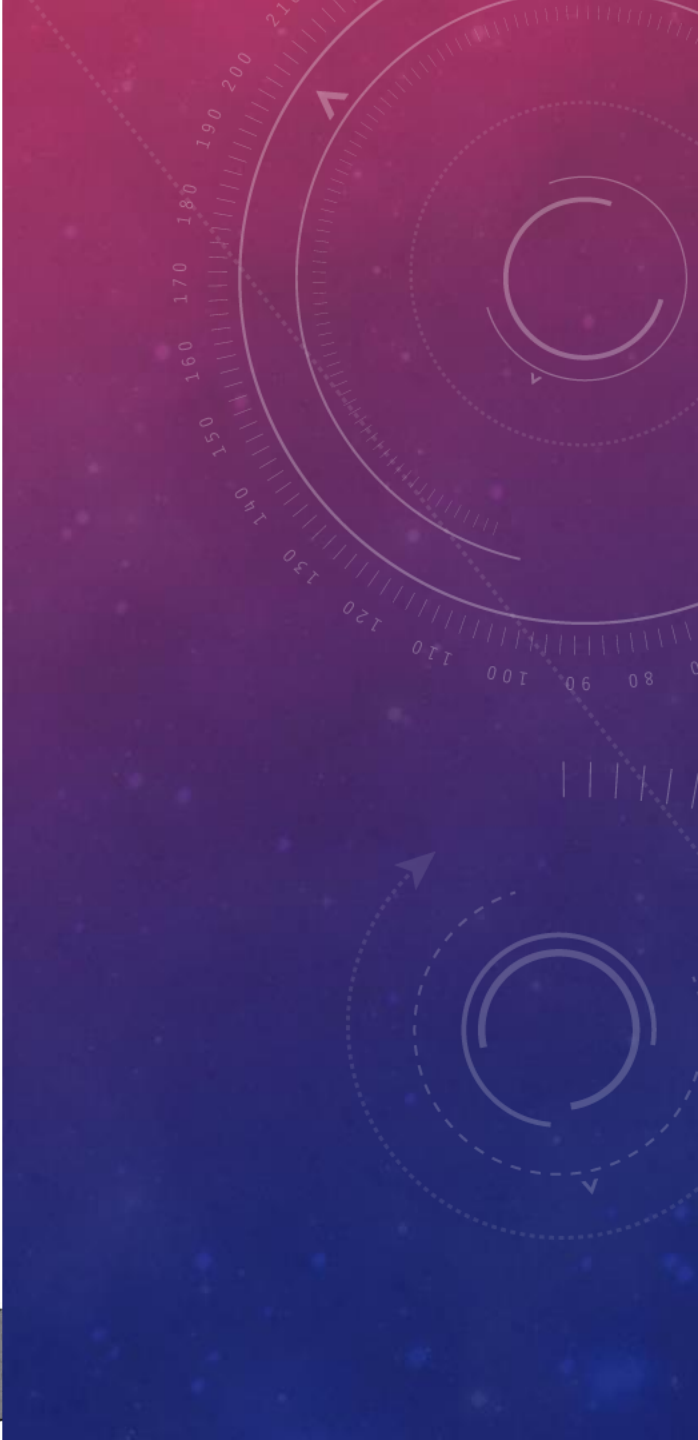
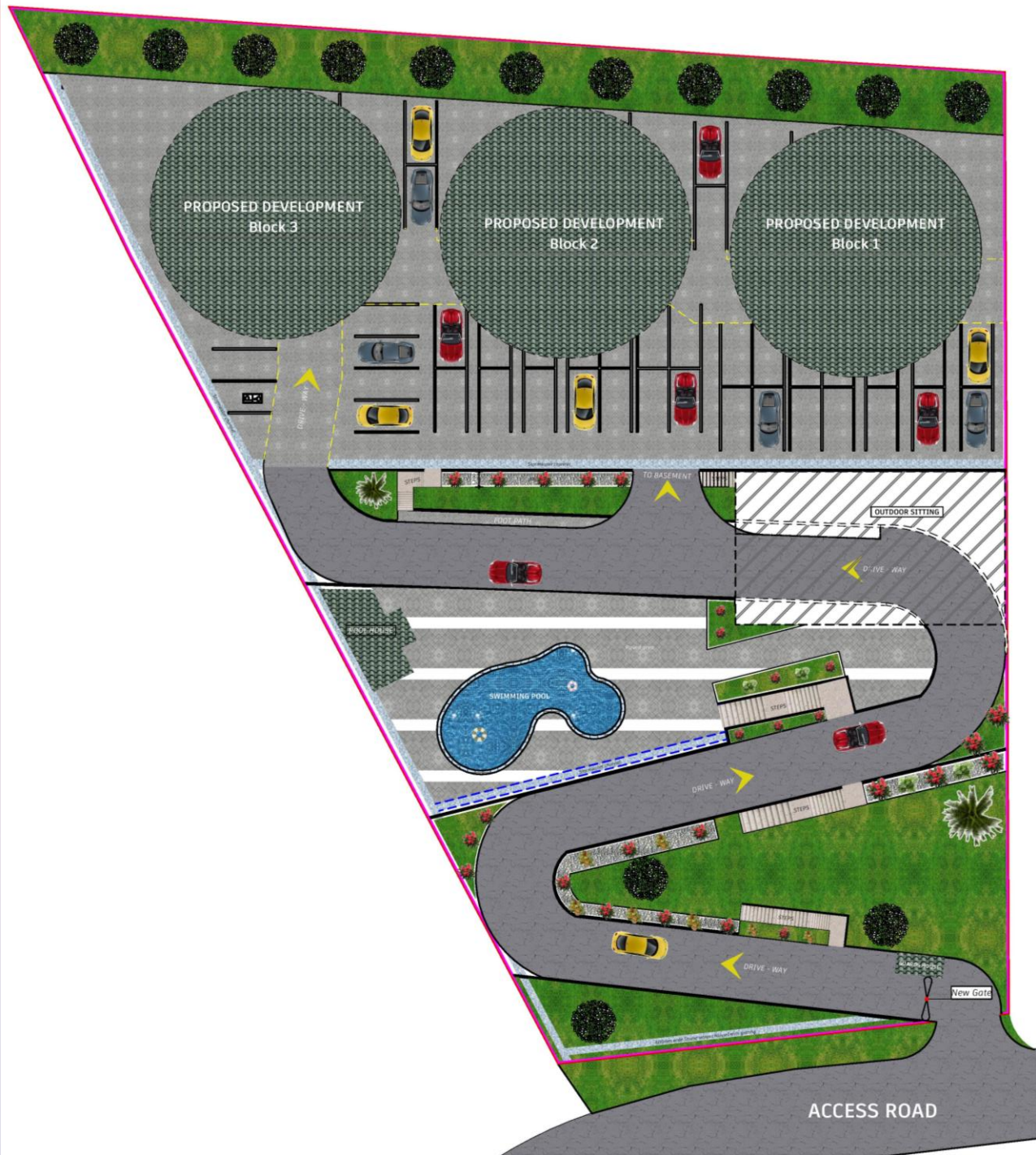


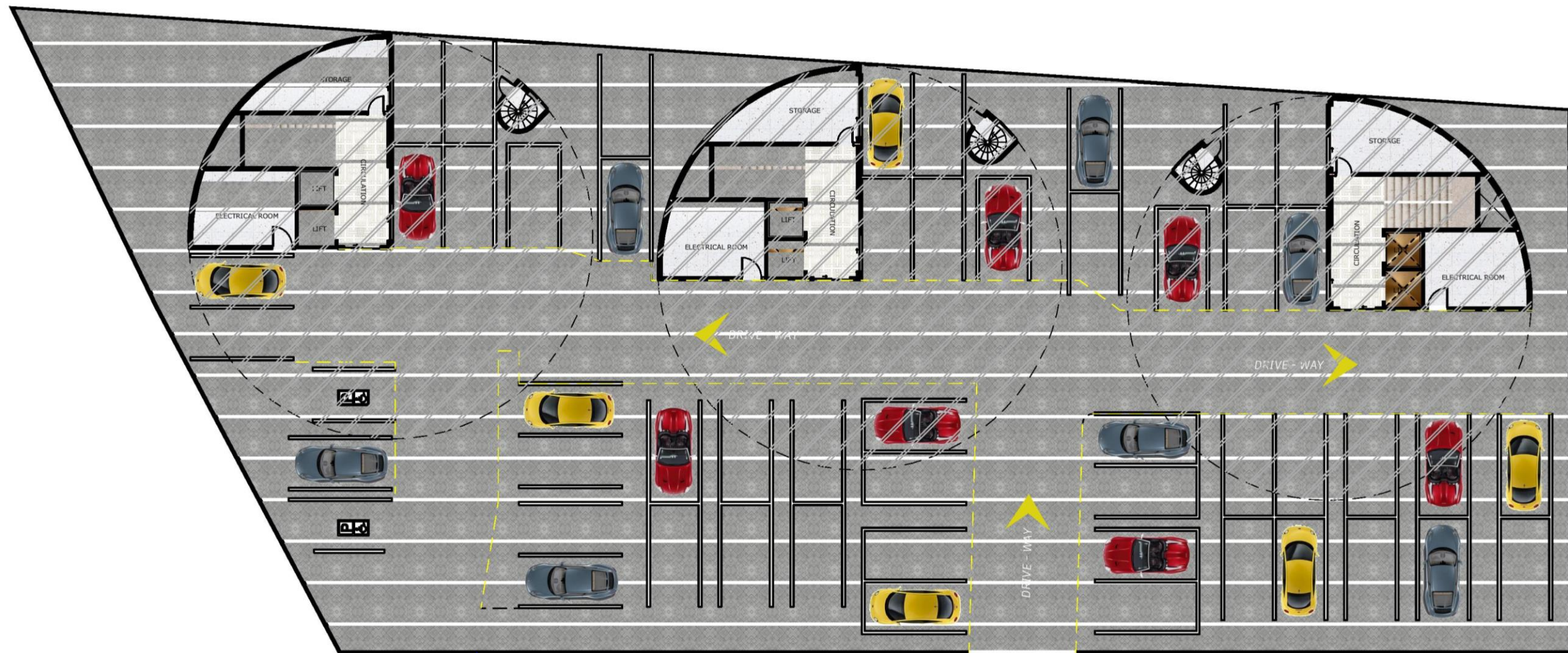




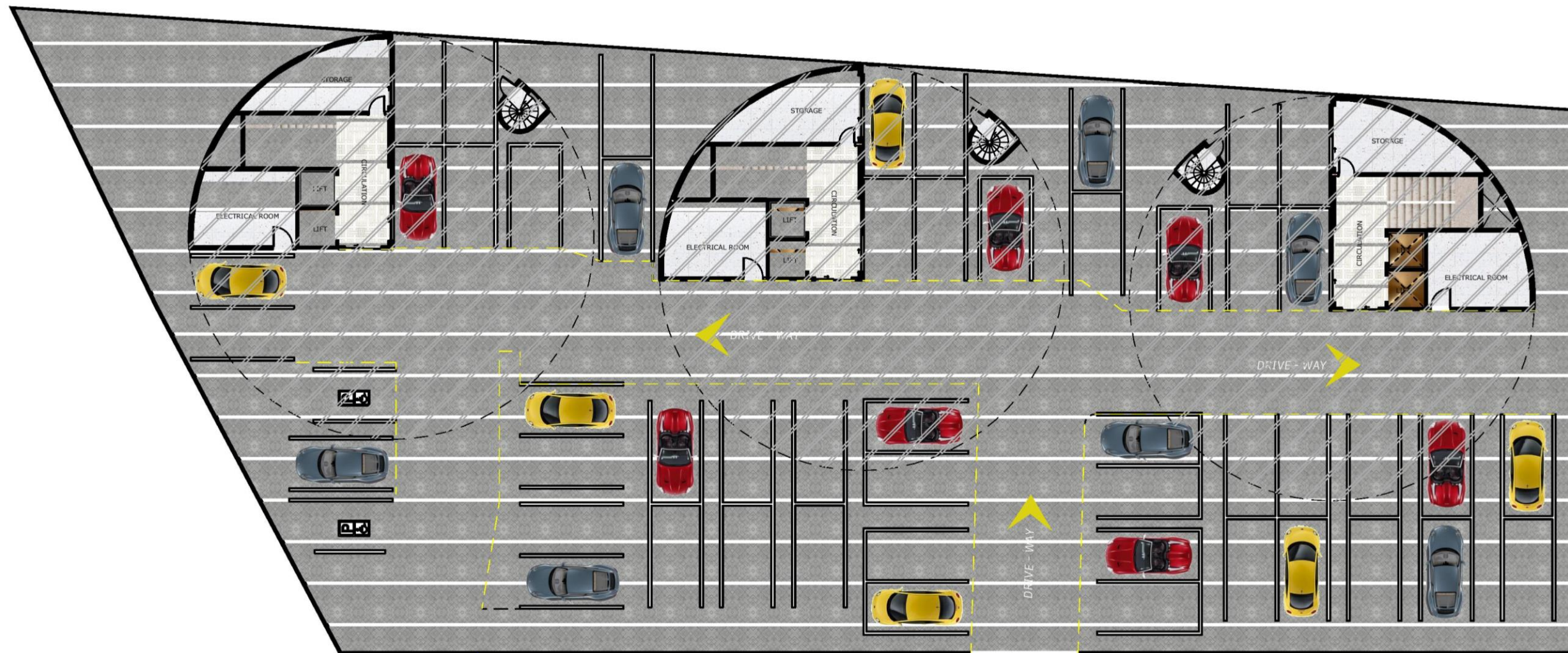








Basement Parking



Ground Floor Parking

Krish 360°

Block 1





1st Floor
Amenity Floor

*(Gym, Massage, Sauna,
Saloon/ Spa Room)*



- LEGEND**
- 1 - BALCONY
 - 2 - LIVING ROOM
 - 3 - DINNING AREA
 - 4 - DRY KITCHEN
 - 5 - WET KITCHEN
 - 6 - TOILET & BATH
 - 7 - COMMON TOILET
 - 8 - BEDROOM 3
 - 9 - BALCONY
 - 10 - BALCONY
 - 11 - BEDROOM 2
 - 12 - LOBBY
 - 13 - LAUNDRY
 - 14 - SERVANT'S ROOM
 - 15 - BEDROOM 1
 - 16 - BALCONY

2nd to 14th Floor

3BHK Apartments +

Maid's Room

315 sqm

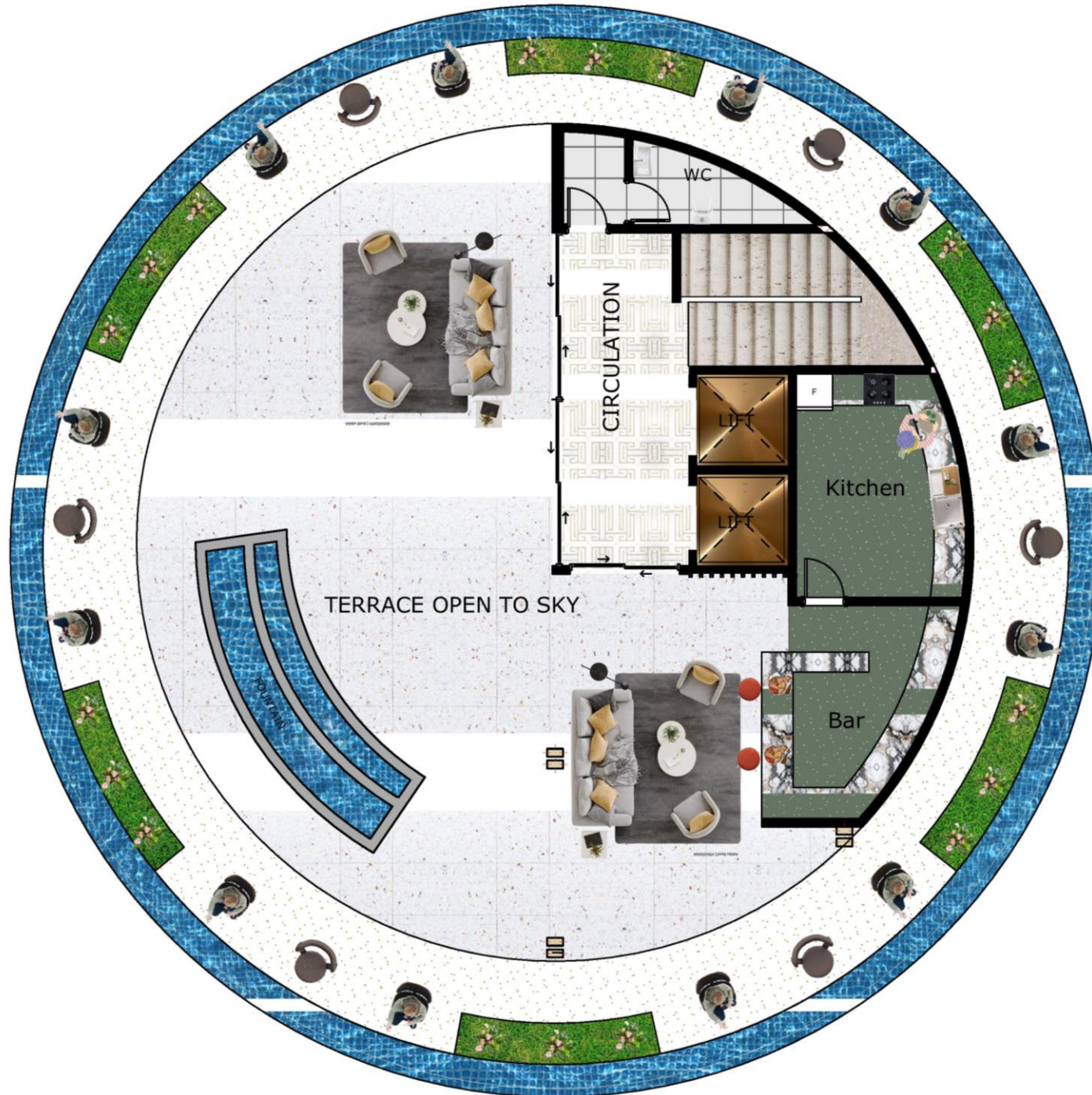
(1 Apartment on each floor)





- LEGEND**
- 1 - BALCONY
 - 2 - LIVING ROOM
 - 3 - GAME AREA
 - 4 - BAR
 - 5 - WET KITCHEN
 - 6 - TOILET & BATH
 - 7 - BEDROOM 3
 - 8 - BALCONY
 - 9 - COMMON TOILET
 - 10 - BALCONY
 - 11 - LOBBY
 - 12 - LAUNDRY
 - 13 - SERVANT'S ROOM
 - 14 - BEDROOM 4
 - 15 - BALCONY

16th Floor
4BHK Penthouse
Apartment + Maid's
Room
630 sqm
Upper Level

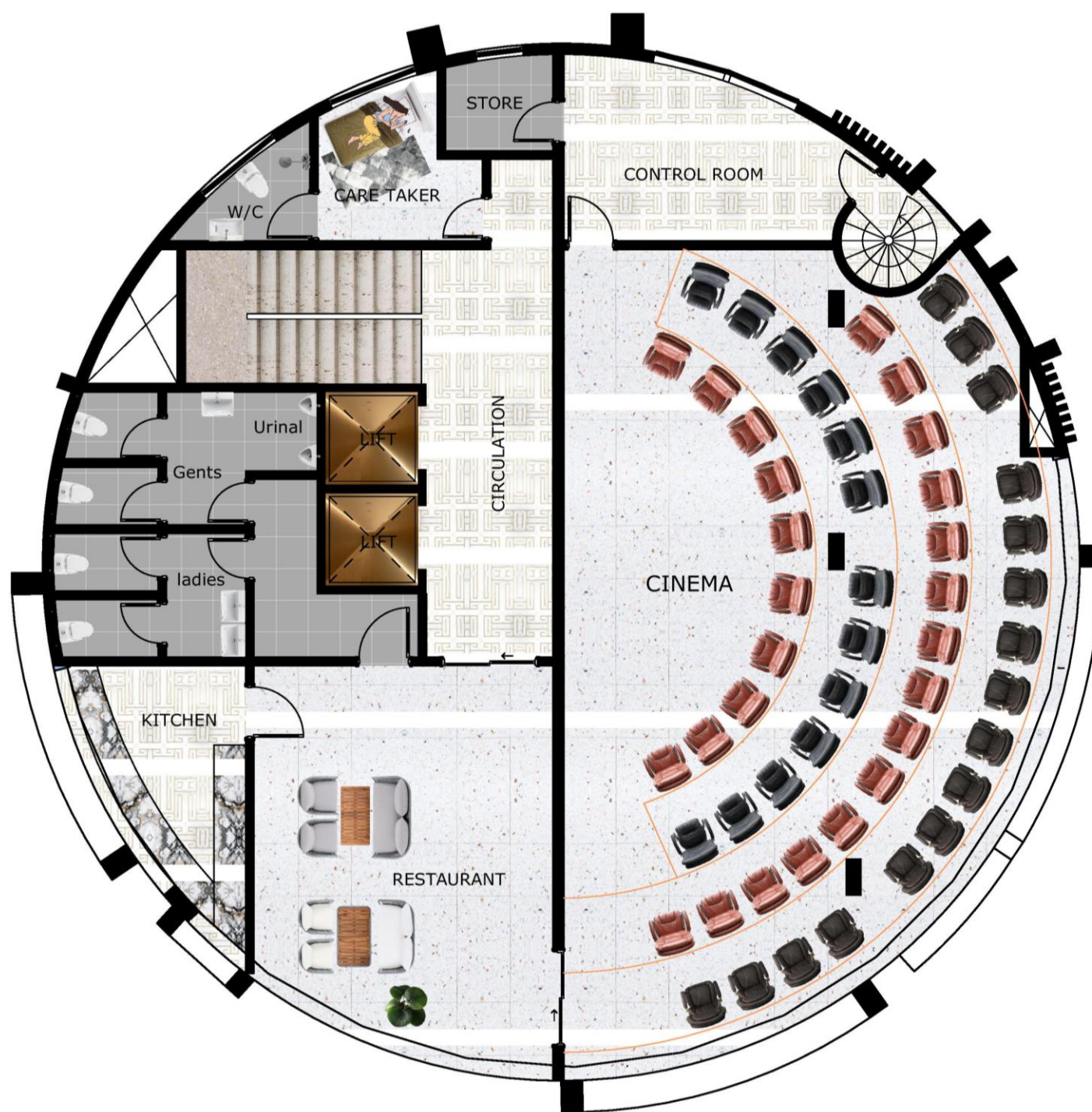


17th Floor
Common Terrace

Krish 360°

Block 2





1st Floor
Amenity Floor
(Theater/ Cinema and
Sitting Area)



- LEGEND**
- 1 - BALCONY
 - 2 - LIVING ROOM
 - 3 - DINNING AREA
 - 4 - DRY KITCHEN
 - 5 - WET KITCHEN
 - 6 - TOILET & BATH
 - 7 - COMMON TOILET
 - 8 - BEDROOM 3
 - 9 - BALCONY
 - 10 - BALCONY
 - 11 - BEDROOM 2
 - 12 - LOBBY
 - 13 - LAUNDRY
 - 14 - SERVANT'S ROOM
 - 15 - BEDROOM 1
 - 16 - BALCONY

2nd to 14th Floor

3BHK Apartments +

Maid's Room

315 sqm

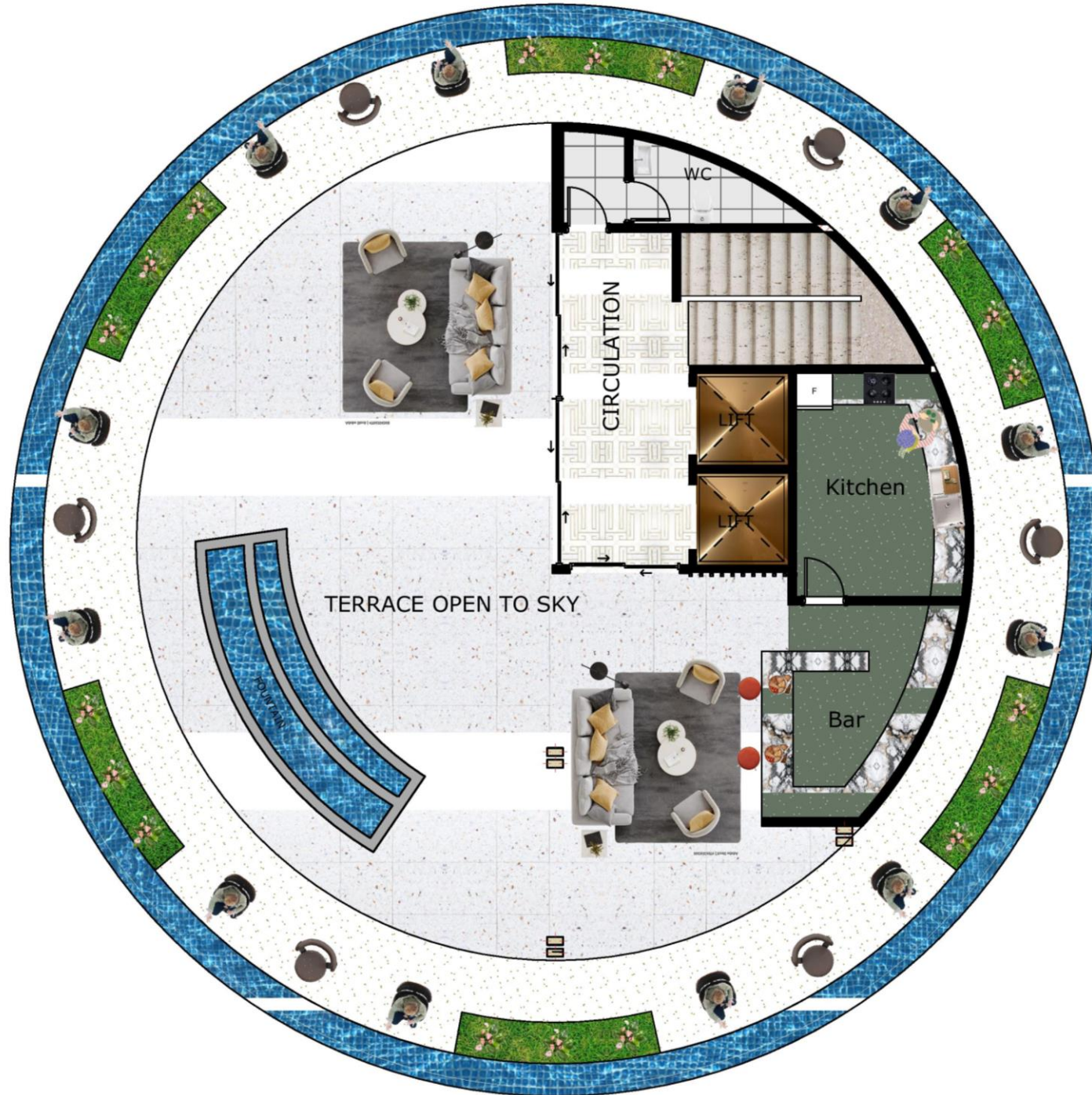
(1 Apartment on each floor)



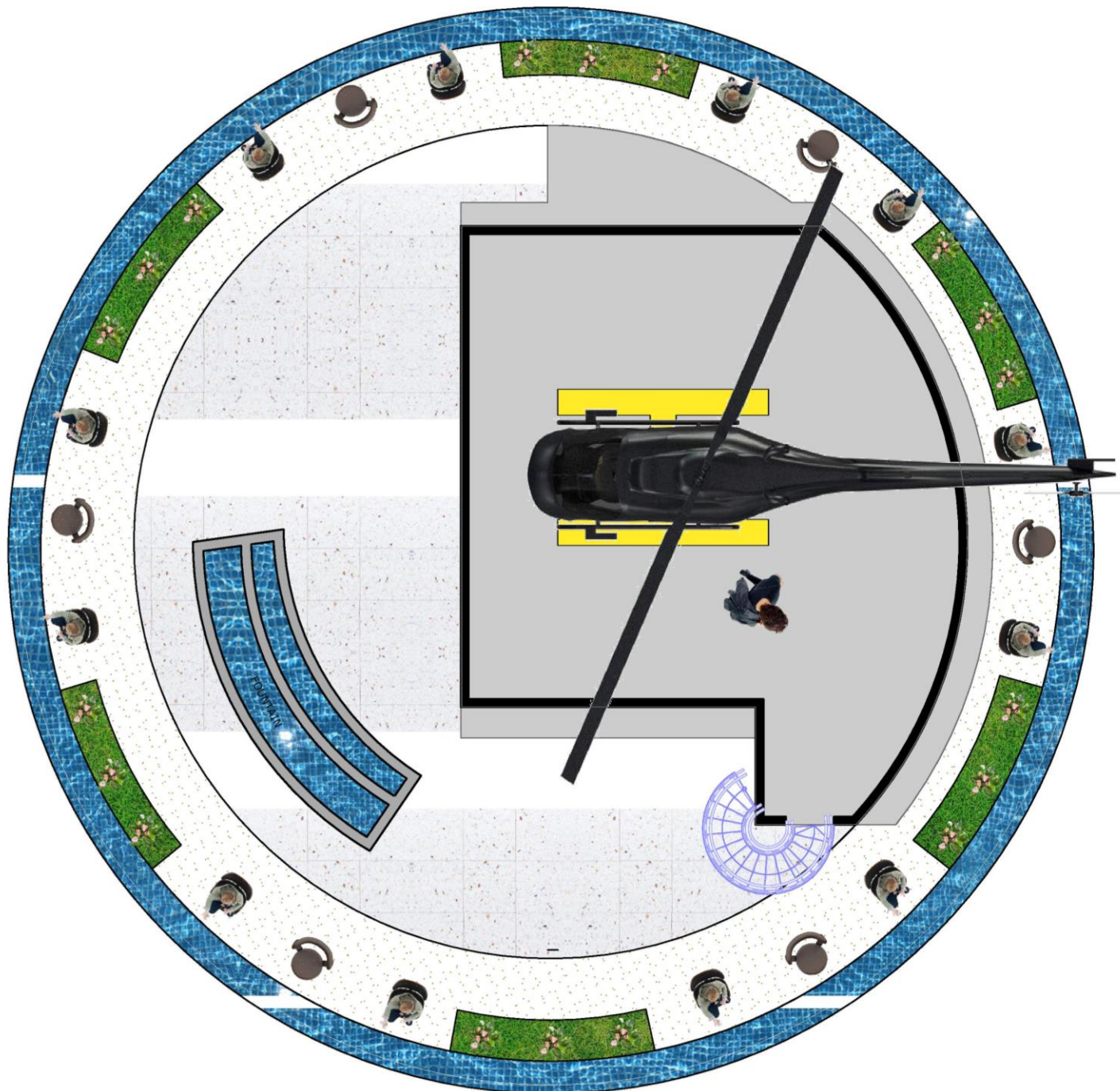


- LEGEND**
- 1 - BALCONY
 - 2 - LIVING ROOM
 - 3 - GAME AREA
 - 4 - BAR
 - 5 - WET KITCHEN
 - 6 - TOILET & BATH
 - 7 - BEDROOM 3
 - 8 - BALCONY
 - 9 - COMMON TOILET
 - 10 - BALCONY
 - 11 - LOBBY
 - 12 - LAUNDRY
 - 13 - SERVANT'S ROOM
 - 14 - BEDROOM 4
 - 15 - BALCONY

16th Floor
4BHK Penthouse
Apartment + Maid's
Room
630 sqm
Upper Level



17th Floor
Common Terrace



18th Floor
(Helipad; Landing/ Take
Off Area)

Krish 360°

Block 3





1st Floor
Amenity Floor

*(Restaurant Area, Bar Area
and Kitchen Area)*



- LEGEND**
- 1 - BALCONY
 - 2 - LIVING ROOM
 - 3 - DINNING AREA
 - 4 - DRY KITCHEN
 - 5 - WET KITCHEN
 - 6 - TOILET & BATH
 - 7 - COMMON TOILET
 - 8 - BEDROOM 3
 - 9 - BALCONY
 - 10 - BALCONY
 - 11 - BEDROOM 2
 - 12 - LOBBY
 - 13 - LAUNDRY
 - 14 - SERVANT'S ROOM
 - 15 - BEDROOM 1
 - 16 - BALCONY

2nd to 14th Floor

3BHK Apartments +

Maid's Room

315 sqm

(1 Apartment on each

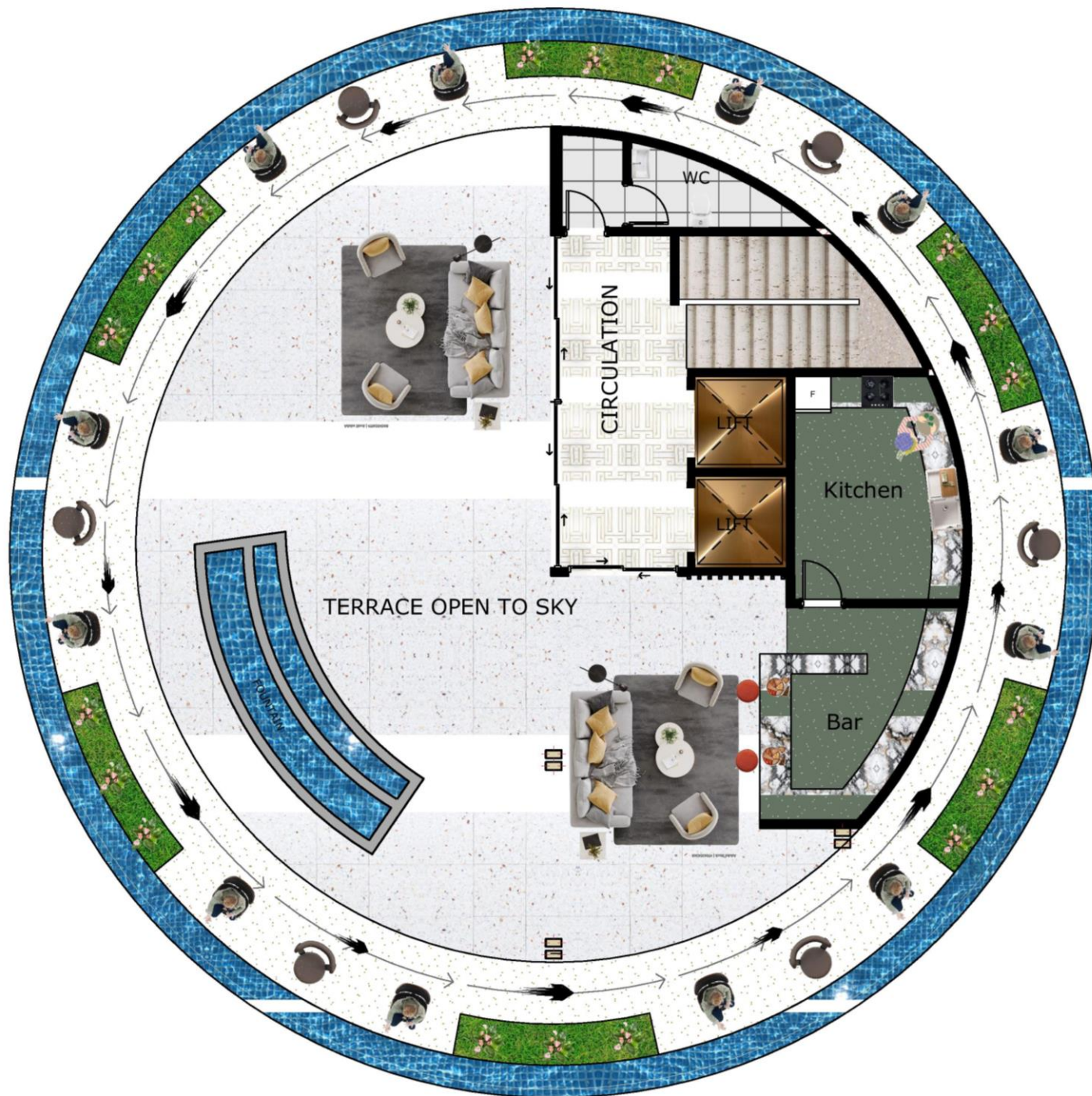
floor)





- LEGEND**
- 1 - BALCONY
 - 2 - LIVING ROOM
 - 3 - GAME AREA
 - 4 - BAR
 - 5 - WET KITCHEN
 - 6 - TOILET & BATH
 - 7 - BEDROOM 3
 - 8 - BALCONY
 - 9 - COMMON TOILET
 - 10 - BALCONY
 - 11 - LOBBY
 - 12 - LAUNDRY
 - 13 - SERVANT'S ROOM
 - 14 - BEDROOM 4
 - 15 - BALCONY

16th Floor
4BHK Penthouse
Apartment + Maid's
Room
630 sqm
Upper Level



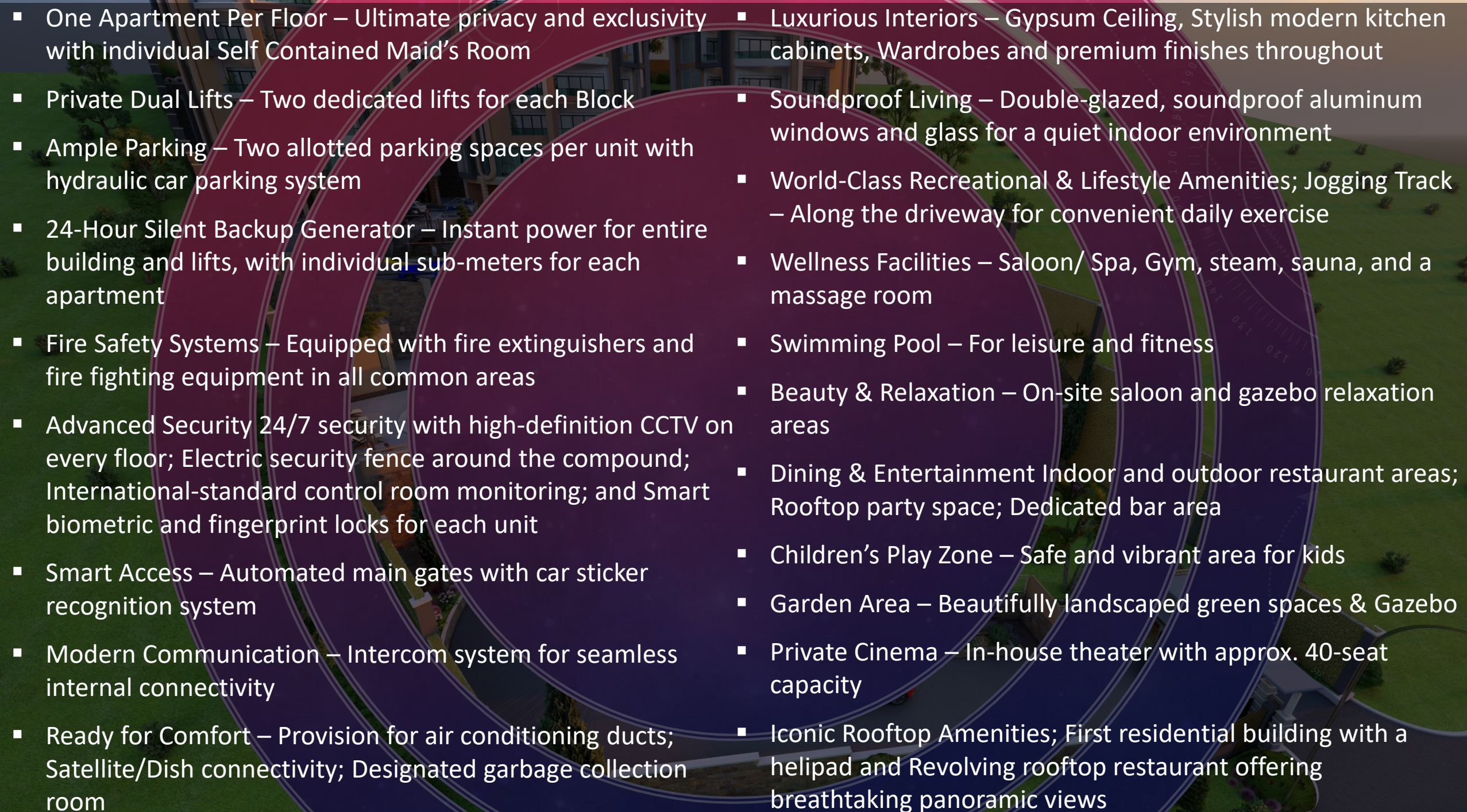
*17th Floor
(Revolving Roof Top
Restaurant)*



Exclusive Luxury Apartment Features & Amenities





- 
- One Apartment Per Floor – Ultimate privacy and exclusivity with individual Self Contained Maid's Room
 - Private Dual Lifts – Two dedicated lifts for each Block
 - Ample Parking – Two allotted parking spaces per unit with hydraulic car parking system
 - 24-Hour Silent Backup Generator – Instant power for entire building and lifts, with individual sub-meters for each apartment
 - Fire Safety Systems – Equipped with fire extinguishers and fire fighting equipment in all common areas
 - Advanced Security 24/7 security with high-definition CCTV on every floor; Electric security fence around the compound; International-standard control room monitoring; and Smart biometric and fingerprint locks for each unit
 - Smart Access – Automated main gates with car sticker recognition system
 - Modern Communication – Intercom system for seamless internal connectivity
 - Ready for Comfort – Provision for air conditioning ducts; Satellite/Dish connectivity; Designated garbage collection room
 - Luxurious Interiors – Gypsum Ceiling, Stylish modern kitchen cabinets, Wardrobes and premium finishes throughout
 - Soundproof Living – Double-glazed, soundproof aluminum windows and glass for a quiet indoor environment
 - World-Class Recreational & Lifestyle Amenities; Jogging Track – Along the driveway for convenient daily exercise
 - Wellness Facilities – Saloon/ Spa, Gym, steam, sauna, and a massage room
 - Swimming Pool – For leisure and fitness
 - Beauty & Relaxation – On-site saloon and gazebo relaxation areas
 - Dining & Entertainment Indoor and outdoor restaurant areas; Rooftop party space; Dedicated bar area
 - Children's Play Zone – Safe and vibrant area for kids
 - Garden Area – Beautifully landscaped green spaces & Gazebo
 - Private Cinema – In-house theater with approx. 40-seat capacity
 - Iconic Rooftop Amenities; First residential building with a helipad and Revolving rooftop restaurant offering breathtaking panoramic views

Krish 360°

Join us on this exciting journey as we redefine the standard of apartment living IN THE MOST LUXURIOUS WAY POSSIBLE

We can't wait to welcome you to a place you'll proudly call home.

Elevate Your Living Experience. 🏠✨



KRISH GROUP OF COMPANIES

102, Kailash Apartments, Plot No. 7, Kataza Close, Next To City Royal Hotel, Opposite Shell Petrol Station, Bugolobi, Kampala

+256 701 292 556 / +256 783 572 335

Krishgroup7@gmail.com

www.Krishgroupuganda.com