



**KRISH GROUP
UGANDA**



COMPANY PROFILE

Building Your Dream Home Together

www.krishgroupuganda.com



INDEX

Company Overview	03
Company Founders	07
Projects Location Site Map	08
Our Projects	09
Company Expansion	24
Future Prospects	27
African Child Foundation	29
Contact Us	32

COMPANY OVERVIEW

Krish Group Uganda has been serving as a leading Real Estate Developer, Civil Engineering, Architecture, Building/Construction Suppliers and related Technical Service Organizations since 2007.

Founded and led by the C.E.O Mr. Ravi Bhatia, Krish Group has grown and Krish Group have synergistically developed our work through 11 different Companies :

- KRISH DEVELOPERS & CONSULTANTS (U) LIMITED
- KRISH INFRASTRUCTURE LIMITED
- KRISH ESSENCE (U) LIMITED
- KRISH RAM DEVELOPERS (U) LIMITED
- KRISH PROJECTS LIMITED
- KRISH PROPERTY CONSULTANTS LIMITED
- KRISH BUILDING SUPPLIES LIMITED
- KRISH AGRICULTURE LIMITED
- KRISH FINANCIAL SERVICES LIMITED
- KRISH AFRICAN CHILD FOUNDATION LIMITED
- KRISH DEVELOPERS CANADA LIMITED

Krish Group has developed it's Trademark by Hard work, Team work, Commitment and Trustworthiness. Krish Group's dedication has enabled us to carry out various projects and also being recognized accordingly.

OUR MISSION

To provide high quality work, customer service and maintain the highest level of professionalism, honesty and fairness in our relationships with our vendors, employees and customers. To continuously grow as a leading Building Developer and keep providing valuable building architectures and to keep expanding into new areas that help build our competencies and customer interests.

OUR VISION

Krish Group has a vision to continuously strive to being the preferred choice in Building Construction and in rendering services such as provision of professionals in Project Management, Quality Assurance/Check and Construction Safety to our esteemed clients.

OUR VALUES

Trust, Integrity, Team Work & Customer Satisfaction.





KRISH GROUP PHILOSOPHY

Krish Group conducts business in a professional manner, maintaining honesty, directness, and a commitment to delivering on our promises regarding the scope and timeline of each project. Our dedication to these principles is evident in every job we undertake. We diligently oversee each project and take personal responsibility for resolving any issues that may arise. We take pride in ensuring top-notch quality, and we firmly stand behind all of our work

KRISH GROUP CODE OF ETHICS

Krish Group is dedicated to upholding the highest standards of ethics in our business operations and interactions with all stakeholders, including our directors, employees, shareholders, customers, associates, and suppliers, as well as with governments, the media, and the public.

Krish Group's commitment to integrity and ethical practices is paramount, as it represents one of our most cherished assets. These values are integral to our ongoing pursuit of sustained profitability and contribute significantly to our company's reputation.

MEANING OF KRISH

K

KNACK

Krish Group employees possess a remarkable knack for accomplishing work targets and skillfully handling various tasks with enthusiasm.

R

REFULGENT

Krish Group ultimate aspiration is to achieve refulgence, radiating brightly through the delivery of services that brilliantly meet the needs and exceed the expectations of every individual we serve.

I

INEFFABLE

Krish Group essence is ineffable, defying description through mere words alone. Its unique attributes and qualities transcend conventional language, making it truly indescribable.

S

STUPENDOUS

The works offered by Krish Group are renowned for their stupendous quality, as they embody a divine and unparalleled construction, making them truly unique.

H

HARMONY

Krish Group is committed to doing our best to foster peace and promote communal harmony within the society where we conduct our business operations.

COMPANY FOUNDERS



MR. RAVI BHATIA

CHIEF EXECUTIVE OFFICER (CEO),
FOUNDER

KRISH GROUP OF COMPANIES

" I have established my trademark through hard work, trustworthiness, and wisdom. My commitment and continuous dedication has enabled me to undertake diverse projects and collaborations with various governments sectors, earning recognition and rewards in retrospect."

MRS. PRITI BHATIA

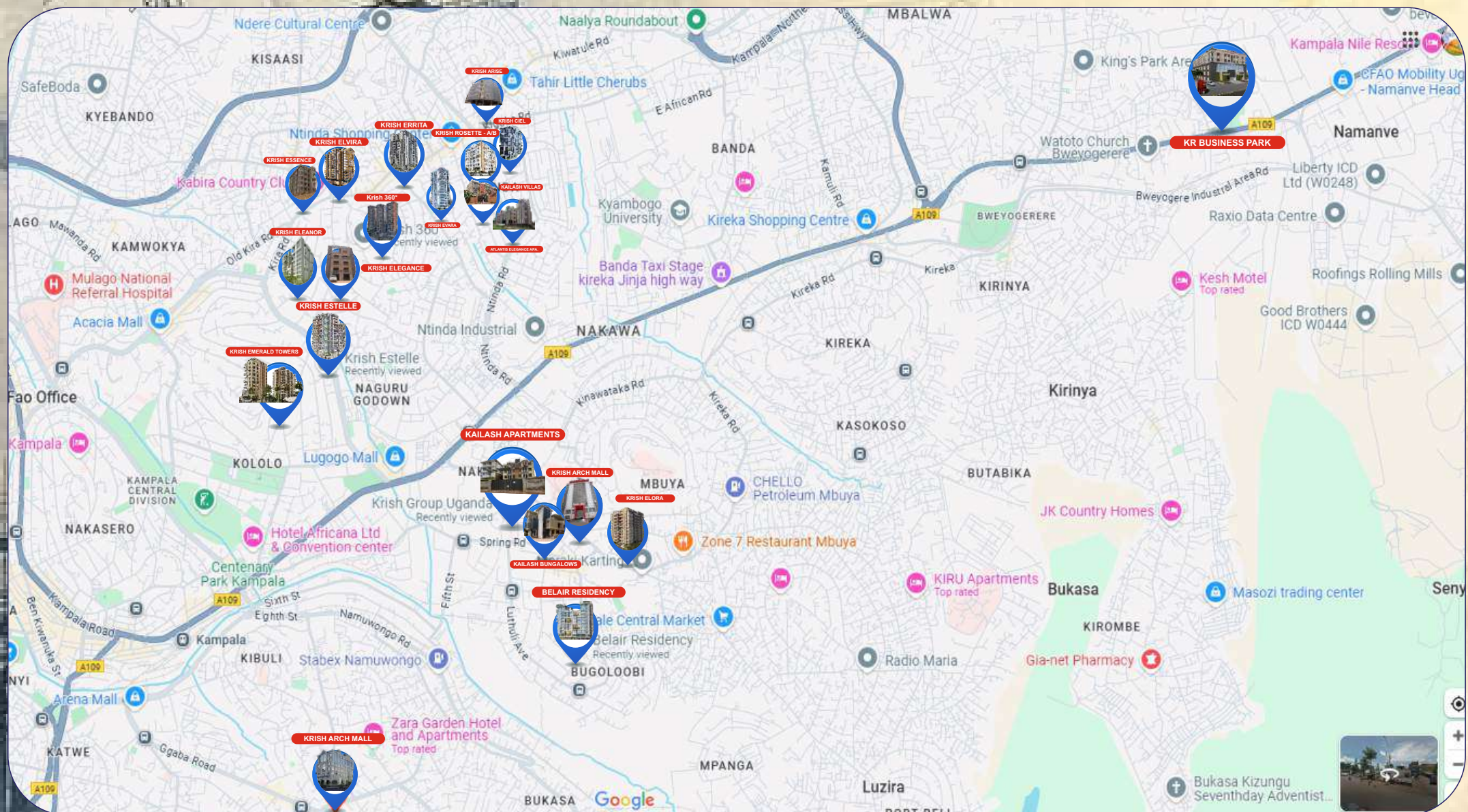
CO-MANAGING DIRECTOR,
CO-FOUNDER

KRISH GROUP OF COMPANIES

" Ever since commencing our real estate development journey in 2007, Krish Group has consistently dedicated personalized attention to each of our projects. Collaborating closely with our clients, Krish Group has achieved exceptional outcomes by creating contemporary properties that fully satisfy their needs and preferences."



PROJECTS LOCATION





KRISH GROUP PROJECTS

Over the course of our expansion, Krish Group has undertaken a unique transformation of underdeveloped areas and plots into sprawling Apartments, Bungalows, and Malls. This significant development has had a remarkable and exponential impact on the social and economic growth of these regions. By creating modern, diverse living and commercial spaces, Krish Group has not only elevated the living standards but also stimulated new business opportunities, driving substantial progress in the overall social and economic development of these areas. Our commitment to enhancing these once underdeveloped spaces remains steadfast as Krish Group continues to be catalysts for a positive change and growth in the communities Krish Group serves.

KRISH GROUP PROJECTS

KRISH DEVELOPERS AND CONSULTANTS (U) LTD

The company stands as a striking architectural embodiment, encapsulating cutting-edge design that redefines urban living. Leveraging its reputation for excellence in Civil Engineering and Building Construction, the company was officially incorporated in 2007. Since then, it has experienced steady growth, swiftly achieving its goals in a remarkably short period.



KRISH DEVELOPERS AND CONSULTANTS (U) LTD

KAILASH APARTMENTS - BUGOLOBI (Completed)



Experience the tranquility of our mind-refreshing, affordable, and comfortable building, featuring a collection of 3 BHK apartments with a delightful terrace.

KRISH MALL - BUGOLOBI (Completed)



Step into the perfect blend of modernity and classic charm in our 6-floor storey building. Discover a versatile space that accommodates offices, shops, and restaurants, each boasting up to 300SQM of exquisite elegance.

KRISH DEVELOPERS AND CONSULTANTS (U) LTD

KAILASH BUNGALOWS - BUGOLOBI (Completed)



Indulge in the nostalgic charm of our luxurious and unique 5BHK bungalows nestled in a prime location along Luthuli Avenue. Experience the allure of timeless elegance and modern comfort in these exquisite properties.

KRISH ELORA - BUGOLOBI (Ongoing)



A modern contemporary surrounding and relaxing environment around Krish Elora established with an aura of relaxation. Located at Plot 99 Portbell Road Opposite Silver Springs Hotel Bugolobi with showrooms & 3bhk units.

KRISH RAM DEVELOPERS (U) LTD

K R BUSINESS PARK - BWEYOGERERE/ NAMANVE (Completed)



Strategically located along the Kampala - Jinja Highway in Bweyogerere, this development comprises both commercial and residential units, including warehouses, showrooms, offices, and stores, with sizes of up to 300SQM.

KRISH JAY RAM (U) LTD

KRISH ARCH MALL - KABALAGALA (Upcoming)



Located in the burgeoning and rapidly developing area of Kabalagala, our affluent large retail mall houses a wide array of stalls, restaurants, and other thriving business establishments. Embrace the bustling atmosphere and vibrant commercial spirit as you explore the diverse offerings within our impressive retail destination.

KRISH ESSENCE (U) LTD

KRISH ESSENCE - BUKOTO (Completed)



Strategically located along the Kampala - Jinja Highway in Bweyogerere, this development comprises both commercial and residential units, including warehouses, showrooms, offices, and stores, with sizes of up to 300SQM.

P&B INFRASTRUCTURE LTD

ATLANTIS ELEGANCE - NAGURU (Completed)



A sophisticated, luxurious, and contemporary 3 BHK apartment with a range of amenities, designed to offer ample space, comfort, and desirability.

KRISH GROUP PROJECTS

KRISH INFRASTRUCTURE LTD

Step into a world of elegance and sophistication as Krish Group proudly present the fusion of art and functionality. This company is an engineering, procurement, construction, and project management firm with a strong ambition to create exceptional high-quality properties. They have a proven track record of successfully constructing classic residential and commercial properties in the Kampala region.

KRISH INFRASTRUCTURE LTD

KRISH ELEGANCE - NAGURU (Completed)



Discover the allure of these exquisite and flawless 3 BHK and 4 BHK penthouse apartments, designed with imaginative elegance. Perched in the prestigious location of plot 49A Upper Naguru, these residences offer a spectacular view that will invigorate and rejuvenate your day.

KRISH ARISE - NAGURU (Completed)



Experience the splendor of our magnificent 2 BHK apartments and penthouses, thoughtfully designed to exude luxury. Strategically nestled at Plot 2 Kimera Close Ntinda, these residences offer a perfect blend of comfort and convenience, ensuring a lifestyle of utmost elegance.



KRISH INFRASTRUCTURE LTD

KRISH ROSETTE BLOCK A - NAGURU (Completed)



Indulge in the sophistication of our spacious apartments with breathtaking views of Naguru, capturing your heart at first sight. Prominently positioned on Gasper Oda Street in Lower Naguru, these residences offer a promising location that enhances your living experience.

KRISH ROSETTE BLOCK B - NAGURU (Completed)



Welcome to our inviting abode, situated next to Krish Rosette Block A. Make yourself at home in our cozy, modern 3 BHK and 4 BHK penthouses, thoughtfully designed to cater to your comfort and style. Embrace the tranquility and elegance of Krish Rosette Block B as you embark on a delightful living experience.



KRISH INFRASTRUCTURE LTD

KRISH ELEANOR - NAGURU (Ongoing)



Discover a truly unique and breathtaking experience with our stunning Tudor-style luxurious apartments located at Saddler Way, near Kampala Parents. These exceptional residences are designed to make your heart feel content, offering a perfect blend of timeless elegance and modern comfort. Krish Group come to a home that exceeds all expectations.

KRISH CIEL - NTINDA (Ongoing)



Size the opportunity of a lifetime to own and reside in these exquisitely preserved and one-of-a-kind apartments along semawata Road, Ntinda. This remarkable offering presents a chance to experience the allure of a beautifully conserved residence, creating an unparalleled living experience for you to cherish.



KRISH INFRASTRUCTURE LTD

KRISH ERRITA - NAGURU (Ongoing)



Experience the Luxury life style in our luxuriously established Krish Errita apartment with a stunning sense of convenience. Stay along the most desired areas in Kampala. It's a 2 BHK, 3BHK and 4BHK Duplex Apartments Located behind TMT Supermarket Upper Naguru on Upper Naguru East Road.

KRISH ESTELLE - KOLOLO (Ongoing)



Voguish and Sensuous Apartments in one of the most posh areas in Kampala, which is surrounded by residential & commercial projects. The location is one of the most happening destinations because of its closeness and easy connectivity to the rest of the city along Nviiri Lane Lugogo By-pass.



KRISH INFRASTRUCTURE LTD

KRISH ELVIRA - NAGURU (Ongoing)



Soothed with modernity and ambiance spaced with an upper terrace. It's located at Kololo. Plot 33, Bukoto Crescent near Kabira Country Club Naguru with 3BHK and 5BHK penthouses.

KRISH EMERALD TOWERS - KOLOLO (Ongoing)



A fabulous apartment designed to meet family needs. It's located at Kololo Plot 4B, York Terrace. This has two Blocks Emerald A 3BHK 1 Apartment Unit per Floor and Emerald B with 5BHK penthouses.

KRISH INFRASTRUCTURE LTD

KRISH 360° - NAGURU (Ongoing)



Step into a new era of iconic living with a visionary landmark rising as Uganda's first circular residential masterpiece. Crafted for the extraordinary, this one-of-a-kind address offers uninterrupted 360° views and an unmatched lifestyle of elegance, innovation, and indulgence with Helipad, Revolving Terrace and among other amenities of Luxurious 3BHK Apartments and 4BHK Penthouses; 1 Apartment Unit per Floor...

KRISH PROJECTS LIMITED

KAILASH VILLA - NAGURU (Completed)



Discover these magnificent, unforgettable, and exquisite 4 BHK structures located along Mungonya Rise, Ntinda. Experience the peace of mind you deserve.

KRISH PROJECTS LIMITED

KRISH EVARA - NAGURU (Upcoming)



A modern tranquility set up to bring joy and peace to families with its outstanding amenities and Location. It's a 3BHK & 5BHK Penthouse. Located in Naguru - Ntinda.

KRISH PROJECTS LIMITED

BELAIR RESIDENCY - BUGOLOBI (Ongoing)



This isn't just a location, it's the sanctuary of joy that you call home; Luxurious and Peaceful 2, 3 and 4BHK Apartments and Penthouses where positive emotions shall flourish, and every brick laid shall be a testament to dreams being built in life.

COMMUNITY ROAD DEVELOPMENT

Krish Group's construction projects have been accompanied by a dedicated focus on infrastructure development. As a result, Krish Group has successfully created well-built roads in the surrounding areas. These roads not only improve the accessibility of our premises for tenants but also eliminate any inconvenience caused by potholes, ensuring a smooth travel experience and area value addition.



Kimera Close Road



Gasper Oda Street

PROJECT MINDSET

Krish Group's main objective is to fulfill our mission of improving the quality and reputation of our real estate offerings with time. Krish Group actively pursues initiatives in this sector to consistently deliver superior, value-added properties, capitalizing on our competitive advantages.

As modernization shapes new consumer expectations, individuals now seek strategically located and eco-friendly homes. In line with this, Krish Group have upcoming projects situated in prominent areas such as Kololo, Naguru, Ntinda, and others, showcasing our commitment to meeting the evolving demands of discerning homebuyers.

KRISH GROUP EXPANSION

Recognizing the essential nature of growth for the success of our business, Krish Group steadfastly pursue expansion and strive to achieve our company's goals.

As a trusted property developer, we are proud to announce our Global expansion in countries such as Canada and India under the umbrella name: Krish Group Canada and Krish Group India, extending our commitment of Building Your Dream Home Together across borders.

This relentless dedication has led to significant improvements in our managerial, legal, and financial aspects. Moreover, it has allowed Krish Group to expand our market share, necessitating the formulation of new strategies to compete effectively with larger competitors.

Krish Group's growth has also been fueled by the unwavering commitment to providing high-quality services to our clients. This dedication has garnered positive feedback, reinforcing our position in the market and fostering collaborative partnerships.

The pursuit of continuous growth has remained a driving force, representing an enduring commitment that unites all our companies.

This strategic growth reflects our ongoing commitment to delivering high-quality developments and innovative luxurious properties across diverse markets, while upholding the values and standards that have earned us the trust of our clients and meeting their needs and requirements.

With a proven track record of excellence and a strong foundation built by serving over 300 clients in Kampala, Krish Group is expanding its footprint in the real estate sector globally.



LEGACY OF
20+
YEARS



WORKER STRENGTH
1000+
APPROX



COMPLETED PROJECT
20+
DONE



This unity has played a pivotal role in the flourishing of our subsidiary businesses, ensuring a seamless chain of service distribution as follows:

KRISH BUILDING SUPPLIES LTD



Construction is at the heart of Krish Group's services, and to ensure the seamless execution of construction work, a constant supply of construction materials is essential. Recognizing this need, Krish Group has conceived the idea of establishing our own entity to provide these materials. This strategic decision has proven to be advantageous as it significantly reduces procurement costs allowing a smooth flow of projects.

Moreover, having our own material supply entity enables us to expedite the construction process ensuring the prompt delivery of building materials and facilitating timely project completion.

KRISH SHINE MAINTENANCE SERVICES LTD

Krish Shine maintenance team responds swiftly to base service inquiries from tenants or apartment owners. This quick response is crucial to maintain the cleanliness, functionality, and safety of the multifamily residences.

Krish Shine base services cover a wide range of areas, such as cleaning, plumbing, painting, and electrical repairs, ensuring the well-being and contentment of our residents.

KRISH PROPERTY CONSULTANTS LTD

Krish Property Consultants Limited is a dedicated real estate service arm of the Krish Group, specializing in property rental, management, and a full suite of post-purchase services. Established to provide seamless support to our valued clients, we ensure that every property purchased through Krish continues to be well-managed, profitable, and stress-free for its owners.

With a client-first approach, Krish Property Consultants Limited takes pride in offering end-to-end solutions, tailored to both residential and commercial property needs. Whether you're a local buyer or an international investor, our expert team ensures your investment is handled with professionalism, transparency, and efficiency.

Our goal is simple - to protect your investment, maximize returns, and offer peace of mind through reliable, comprehensive property management services.

KRISH GROUP FUTURE PROSPECTS

After nearly two decades of operation, the company remains dedicated to formulating numerous plans and activities that will consistently support and enhance its services.

Throughout its journey, Krish Group's commitment to improvement and innovation remains unwavering, ensuring it stays at the forefront of delivering exceptional offerings to its clients.

WIDE EXPANSION

Krish Group's goal is to become the premier developer in Uganda, and are determined to achieve this ambition by expanding our services across the entire country. At Krish Group, we continue to progress with our projects, we anticipate significant growth that will enable us to successfully accomplish the objectives set by our company.

KRISH AGRICULTURE LIMITED

Recognizing agriculture as one of the most significant economic activities in Uganda, Krish Group has undertaken the initiative of establishing farms with advanced farming methods. Our goal is to boost agricultural production in the country and thereby make a positive contribution to the overall well-being of the nation.

KRISH FINANCIAL LIMITED

Krish Group highly values giving back to the communities where Krish Group has established our presence. As part of our commitment, we are eager to initiate a program that provides financial assistance to the people we serve.

Krish Group firmly believes that this endeavour will significantly contribute to the development of individuals, as the funds provided will help them realize their plans and aspirations. This initiative aligns with our vision of fostering growth and prosperity within the communities we are privileged to be a part of.

KRISH MANUFACTURERS LIMITED

BUBU (Buy Uganda Build Uganda) stands as one of the key pillars driving the rapid growth of Uganda. This initiative has been established to actively contribute to Uganda's production chain. By promoting the concept of buying locally produced goods and supporting domestic industries, BUBU aims to foster economic growth and development within the country.



KRISH AFRICAN CHILD FOUNDATION



we have also established our non-profit organization, Krish African Child Foundation which is Internatonally registered (Registratoion No: 80034155335828) and is devoted to adresssing in direct circumstances

The organization employs straightforward criteria, rather than sophisticated ones, to identify children facing abject problems. Chief among these criteria is the lack of basic necessities, including shelter, food, clothing, and access to water. Equally vital in their assessment is the consideration of the "Human condition," which encompasses the physical health of the children, the level of parental care they receive, and the extent of protection provided.

By focusing on these essential aspects, the organization aims to provide the necessary support and assistance, ensuring the well-being and improvement of these children facing hardships.

OBJECTIVES

The organization's mission encompasses several essential goals:

- Establishing a home for the homeless, distressed individuals, and HIV/AIDS orphans.
- Providing immediate and timely assistance to orphans, fulfilling their basic needs such as food, clothing, shelter, and elementary education. Additionally, the organization will offer training in self-reliance skills, available at the center.
- Nurturing sick and malnourished orphaned children to improve their health and well-being through our child survival program.



Krish Group firmly acknowledge that children hold a unique and privileged position in African society. To ensure their holistic development, Krish Group believes that children should grow up in a family environment filled with happiness, love, guidance, and understanding.

Krish Group is committed to caring for their physical, mental, moral, and social development, recognizing the importance of providing a supportive and nurturing atmosphere for their overall growth.

COMMUNITY EMPOWERMENT/DEVELOPMENT PROGRAMS

Krish Group takes immense joy in giving back to the community. It was with great enthusiasm that Krish Group participated in the Kiswa Community Marathon. During the marathon, Krish Group proudly extended our support by providing essential equipment such as reflector jackets and drinking water to the participants.

Krish Group's commitment to contributing to the community is something Krish Group holds dearly, and Krish Group is grateful for the chance to be involved in such meaningful and impactful initiations.



Quality of
Life (water,
sanitation,
Health)



Education
&
Skill-ing

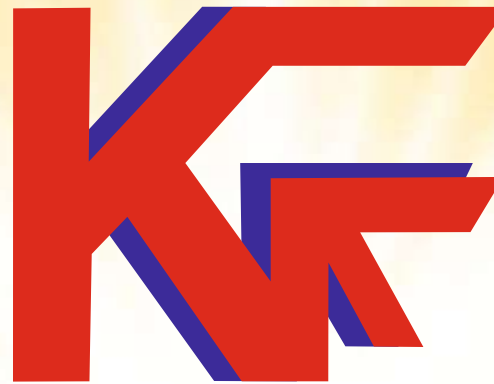


Inclusion
(financial,
Differently-
abled)



Environment
Preservation
Enrichment





KRISH GROUP

APARTMENTS | WAREHOUSES | OFFICES | SHOPS

SCAN FOR HEAD OFFICE



LOCATION

: CONTACT US :

102 - Kailash Apartments, Plot 7 Kataza Close,
Opposite Village Mall, Bugolobi, Kampala, Uganda.

+256 701 292 556 | +256 783 572 335

www.krishgroupuganda.com

 krish_group_

 Krish Group of Companies

 krishgroup2006@yahoo.com

 +256 783 572 335

 +256 701 292 556